

## MMP-10 Rabbit pAb

CatalogNo: YT2793

### | Key Features

#### Host Species

- Rabbit

#### Reactivity

- Human, Mouse, Rat

#### Applications

- IHC, IF, WB, ELISA

#### MW

- 54kD (Observed)

#### Isotype

- IgG

### | Recommended Dilution Ratios

**WB 1:500-2000**

**IHC 1:100-1:300**

**IF 1:200-1:1000**

**ELISA 1:40000**

**Not yet tested in other applications.**

### | Storage

**Storage\*** -15°C to -25°C/1 year(Do not lower than -25°C)

**Formulation** Liquid in PBS containing 50% glycerol, 0.5% BSA and 0.02% sodium azide.

### | Basic Information

**Clonality** Polyclonal

### | Immunogen Information

**Immunogen** The antiserum was produced against synthesized peptide derived from human MMP-10. AA range:361-410

**Specificity** MMP-10 Polyclonal Antibody detects endogenous levels of MMP-10 protein.

## | Target Information

**Gene name**           MMP10

**Protein Name**       Stromelysin-2

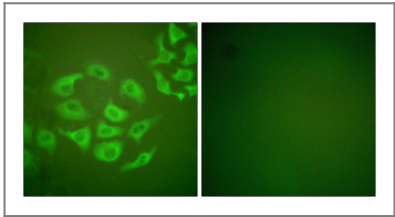
Organism	Gene ID	UniProt ID
Human	<a href="#">4319;</a>	<a href="#">P09238;</a>
Mouse	<a href="#">17384;</a>	<a href="#">O55123;</a>
Rat	<a href="#">117061;</a>	<a href="#">P07152;</a>

**Cellular Localization**       Secreted, extracellular space, extracellular matrix .

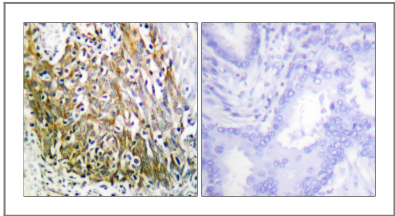
**Tissue specificity**   Coronary artery,Ovary,

**Function**           Catalytic activity:Similar to stromelysin 1, but action on collagen types III, IV and V is weak.,cofactor:Binds 2 zinc ions per subunit.,cofactor:Calcium.,Domain:The conserved cysteine present in the cysteine-switch motif binds the catalytic zinc ion, thus inhibiting the enzyme. The dissociation of the cysteine from the zinc ion upon the activation-peptide release activates the enzyme.,Function:Can degrade fibronectin, gelatins of type I, III, IV, and V; weakly collagens III, IV, and V. Activates procollagenase.,similarity:Belongs to the peptidase M10A family.,similarity:Contains 4 hemopexin-like domains.,

## | Validation Data



Immunofluorescence analysis of HepG2 cells, using MMP-10 Antibody. The picture on the right is blocked with the synthesized peptide.



Immunohistochemistry analysis of paraffin-embedded human lung carcinoma tissue, using MMP-10 Antibody. The picture on the right is blocked with the synthesized peptide.

## | Contact information

Orders: order.cn@immunoway.com  
Support: support.cn@immunoway.com  
Telephone: 400-8787-807(China)  
Website: <http://www.immunoway.com.cn>  
Address: 2200 Ringwood Ave San Jose, CA 95131 USA



Please scan the QR code  
to access additional  
product information:  
**MMP-10 Rabbit pAb**

---

For Research Use Only. Not for Use in Diagnostic Procedures.

[Antibody](#) | [ELISA Kits](#) | [Protein](#) | [Reagents](#)