

## MLK1 Rabbit pAb

CatalogNo: YT2783

### Key Features

#### Host Species

- Rabbit

#### Reactivity

- Human, Mouse

#### Applications

- IHC, IF, ELISA

#### MW

- 122kD (Calculated)

#### Isotype

- IgG

### Recommended Dilution Ratios

IHC 1:100-1:300

ELISA 1:20000

IF 1:50-200

### Storage

#### Storage\*

-15°C to -25°C/1 year (Do not lower than -25°C)

#### Formulation

Liquid in PBS containing 50% glycerol, 0.5% BSA and 0.02% sodium azide.

### Basic Information

#### Clonality

Polyclonal

### Immunogen Information

#### Immunogen

The antiserum was produced against synthesized peptide derived from human MAP3K9. AA range: 561-610

#### Specificity

MLK1 Polyclonal Antibody detects endogenous levels of MLK1 protein.

### Target Information

**Gene name** MAP3K9

**Protein Name** Mitogen-activated protein kinase kinase kinase 9

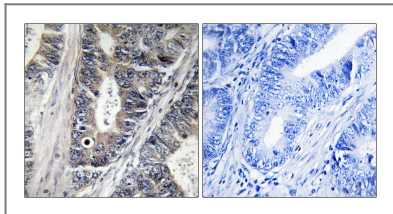
Organism	Gene ID	UniProt ID
Human	<a href="#">4293</a> ;	<a href="#">P80192</a> ;
Mouse	<a href="#">338372</a> ;	<a href="#">Q3U1V8</a> ;

**Cellular Localization** intracellular,integral component of membrane,

**Tissue specificity** Expressed in epithelial tumor cell lines of colonic, breast and esophageal origin.

**Function** Catalytic activity:ATP + a protein = ADP + a phosphoprotein.,cofactor:Magnesium.,enzyme regulation:Homodimerization via the leucine zipper domains is required for autophosphorylation and subsequent activation.,Function:Activates the JUN N-terminal pathway.,PTM:Autophosphorylation on serine and threonine residues within the activation loop plays a role in enzyme activation. Thr-312 is likely to be the main autophosphorylation site.,similarity:Belongs to the protein kinase superfamily. STE Ser/Thr protein kinase family. MAP kinase kinase kinase subfamily.,similarity:Contains 1 protein kinase domain.,similarity:Contains 1 SH3 domain.,subunit:Homodimer.,tissue specificity:Expressed in epithelial tumor cell lines of colonic, breast and esophageal origin.,

## Validation Data



Immunohistochemistry analysis of paraffin-embedded human colon carcinoma tissue, using MAP3K9 Antibody. The picture on the right is blocked with the synthesized peptide.

## Contact information

Orders: [order.cn@immunoway.com](mailto:order.cn@immunoway.com)  
Support: [support.cn@immunoway.com](mailto:support.cn@immunoway.com)  
Telephone: 400-8787-807(China)  
Website: <http://www.immunoway.com.cn>  
Address: 2200 Ringwood Ave San Jose, CA 95131 USA



Please scan the QR code to access additional product information:  
**MLK1 Rabbit pAb**