

MKP-3 Rabbit pAb

CatalogNo: YT2774

| Key Features

Host Species

- Rabbit

Reactivity

- Human, Mouse, Rat

Applications

- WB, IHC, IF, ELISA

MW

- 42kD (Observed)

Isotype

- IgG

| Recommended Dilution Ratios

WB 1:500-1:2000

IHC 1:100-1:300

IF 1:200-1:1000

ELISA 1:20000

Not yet tested in other applications.

| Storage

Storage* -15°C to -25°C/1 year (Do not lower than -25°C)

Formulation Liquid in PBS containing 50% glycerol, 0.5% BSA and 0.02% sodium azide.

| Basic Information

Clonality Polyclonal

| Immunogen Information

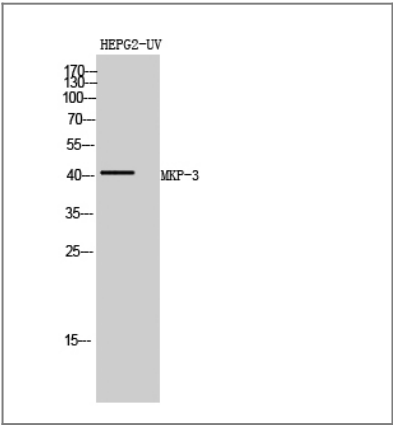
Immunogen The antiserum was produced against synthesized peptide derived from human DUSP6. AA range: 61-110

Specificity MKP-3 Polyclonal Antibody detects endogenous levels of MKP-3 protein.

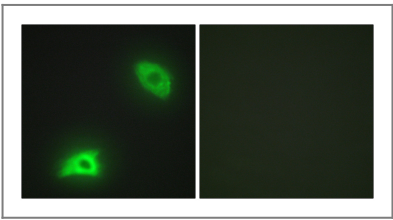
Target Information

Gene name	DUSP6		
Protein Name	Dual specificity protein phosphatase 6		
	Organism	Gene ID	UniProt ID
	Human	1848 ;	Q16828 ;
	Mouse	67603 ;	Q9DBB1 ;
	Rat	116663 ;	Q64346 ;
Cellular Localization	Cytoplasm .		
Tissue specificity	Expressed in keratinocytes (at protein level).		
Function	Catalytic activity:A phosphoprotein + H(2)O = a protein + phosphate.,Catalytic activity:Protein tyrosine phosphate + H(2)O = protein tyrosine + phosphate.,Function:Inactivates MAP kinases. Has a specificity for the ERK family.,similarity:Belongs to the protein-tyrosine phosphatase family. Non-receptor class dual specificity subfamily.,similarity:Contains 1 rhodanese domain.,similarity:Contains 1 tyrosine-protein phosphatase domain.,		

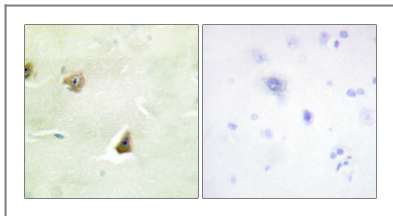
Validation Data



Western Blot analysis of HEPG2-UV cells using MKP-3 Polyclonal Antibody diluted at 1:500



Immunofluorescence analysis of HeLa cells, using DUSP6 Antibody. The picture on the right is blocked with the synthesized peptide.



Immunohistochemistry analysis of paraffin-embedded human brain tissue, using DUSP6 Antibody. The picture on the right is blocked with the synthesized peptide.

| Contact information

Orders: order.cn@immunoway.com
Support: support.cn@immunoway.com
Telephone: 400-8787-807(China)
Website: <http://www.immunoway.com.cn>
Address: 2200 Ringwood Ave San Jose, CA 95131 USA



Please scan the QR code
to access additional
product information:

MKP-3 Rabbit pAb

For Research Use Only. Not for Use in Diagnostic Procedures.

[Antibody](#) | [ELISA Kits](#) | [Protein](#) | [Reagents](#)