

MIP-1 α Rabbit pAb

CatalogNo: YT2765

Key Features

Host Species

- Rabbit

Reactivity

- Human,Rat,Mouse,

Applications

- IHC,IF,ELISA

MW

- 10kD (Calculated)

Isotype

- IgG

Recommended Dilution Ratios

IHC 1:100-1:300

ELISA 1:20000

IF 1:50-200

Storage

Storage*

-15°C to -25°C/1 year(Do not lower than -25°C)

Formulation

Liquid in PBS containing 50% glycerol, 0.5% BSA and 0.02% sodium azide.

Basic Information

Clonality

Polyclonal

Immunogen Information

Immunogen

The antiserum was produced against synthesized peptide derived from human MIP-1 α . AA range:26-75

Specificity

MIP-1 α Polyclonal Antibody detects endogenous levels of MIP-1 α protein.

Target Information

Gene name CCL3

Protein Name C-C motif chemokine 3

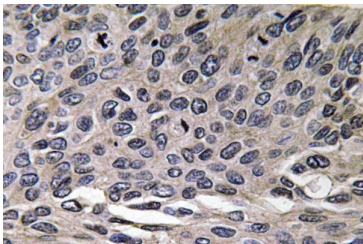
Organism	Gene ID	UniProt ID
Human	6348;	P10147;
Mouse		P10855;

Cellular Localization Secreted.

Tissue specificity Brain,Leukocyte,Lymphocyte,Natural killer cell,T-cell,

Function Function:Monokine with inflammatory and chemokinetic properties. Binds to CCR1, CCR4 and CCR5. One of the major HIV-suppressive factors produced by CD8+ T-cells. Recombinant MIP-1-alpha induces a dose-dependent inhibition of different strains of HIV-1, HIV-2, and simian immunodeficiency virus (SIV).,induction:By TPA or PHA (TPA = 12-O-tetradecanoyl phorbol-13 acetate (tumor promoter); PHA = phytohemagglutinin (T-cell mitogen)).,online information:Macrophage inflammatory protein entry,PTM:N-terminal processed form LD78-alpha(4-69) is produced by proteolytic cleavage after secretion from HTLV1-transformed T-cells.,similarity:Belongs to the intercrine beta (chemokine CC) family.,subunit:Self-associates. Also heterodimer of MIP-1-alpha(4-69) and MIP-1-beta(3-69).,

Validation Data



Immunohistochemistry analysis of MIP-1α antibody in paraffin-embedded human lung carcinoma tissue.

Contact information

Orders: order.cn@immunoway.com
Support: support.cn@immunoway.com
Telephone: 400-8787-807(China)
Website: <http://www.immunoway.com.cn>
Address: 2200 Ringwood Ave San Jose, CA 95131 USA



Please scan the QR code to access additional product information:
MIP-1α Rabbit pAb