

## Mindin Rabbit pAb

CatalogNo: YT2763

### Key Features

**Host Species**

- Rabbit

**Reactivity**

- Human, Mouse, Rat, Monkey

**Applications**

- WB, IHC

**MW**

- 37kD (Observed)

**Isotype**

- IgG

### Recommended Dilution Ratios

**WB 1:500-2000****IHC 1:50-300**

### Storage

**Storage\***

-15°C to -25°C/1 year (Do not lower than -25°C)

**Formulation**

Liquid in PBS containing 50% glycerol, 0.5% BSA and 0.02% sodium azide.

### Basic Information

**Clonality**

Polyclonal

### Immunogen Information

**Immunogen**

The antiserum was produced against synthesized peptide derived from human SPON2. AA range: 71-120

**Specificity**

Mindin Polyclonal Antibody detects endogenous levels of Mindin protein.

### Target Information

**Gene name**

SPON2

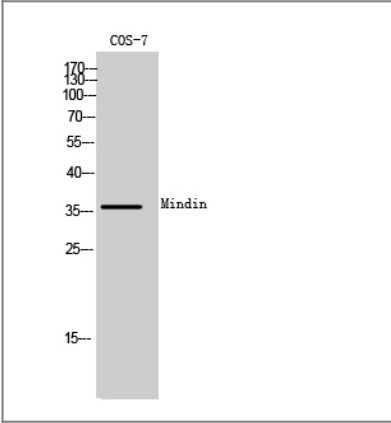
Protein Name	Spondin-2		
	Organism	Gene ID	UniProt ID
	Human	<a href="#">10417;</a>	<a href="#">Q9BUD6;</a>
	Mouse	<a href="#">100689;</a>	<a href="#">Q8BMS2;</a>
	Rat	<a href="#">171569;</a>	<a href="#">Q9WV75;</a>

**Cellular Localization** Secreted, extracellular space, extracellular matrix .

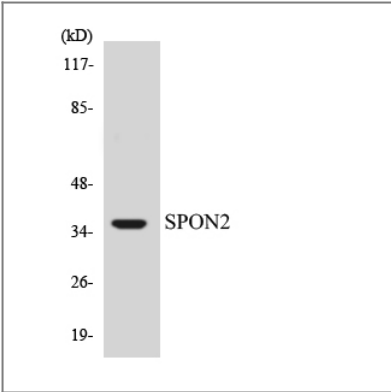
**Tissue specificity** Expressed in normal lung tissue but not in lung carcinoma cell lines.

**Function** Function:Cell adhesion protein that promote adhesion and outgrowth of hippocampal embryonic neurons. Binds directly to bacteria and their components and functions as an opsonin for macrophage phagocytosis of bacteria. Essential in the initiation of the innate immune response and represents a unique pattern-recognition molecule in the ECM for microbial pathogens.,similarity:Contains 1 spondin domain.,similarity:Contains 1 TSP type-1 domain.,tissue specificity:Expressed in normal lung tissues but not in lung carcinoma cell lines.,

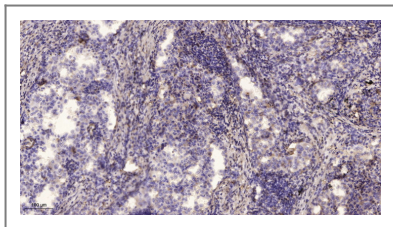
## | Validation Data



Western Blot analysis of COS-7 cells using Mindin Polyclonal Antibody



Western blot analysis of the lysates from HUVECcells using SPON2 antibody.



Immunohistochemical analysis of paraffin-embedded human lung cancer. 1, Antibody was diluted at 1:200(4° overnight). 2, Tris-EDTA,pH9.0 was used for antigen retrieval. 3,Secondary antibody was diluted at 1:200(room temperature, 45min).

## | Contact information

Orders: order.cn@immunoway.com  
Support: support.cn@immunoway.com  
Telephone: 400-8787-807(China)  
Website: <http://www.immunoway.com.cn>  
Address: 2200 Ringwood Ave San Jose, CA 95131 USA



Please scan the QR code  
to access additional  
product information:  
**Mindin Rabbit pAb**

---

For Research Use Only. Not for Use in Diagnostic Procedures.

[Antibody](#) | [ELISA Kits](#) | [Protein](#) | [Reagents](#)