

## MGST2 Rabbit pAb

CatalogNo: YT2752

### Key Features

#### Host Species

- Rabbit

#### Reactivity

- Human, Mouse

#### Applications

- WB, ELISA, IHC

#### MW

- 17kD (Observed)

#### Isotype

- IgG

### Storage

**Storage\*** -15°C to -25°C/1 year (Do not lower than -25°C)

**Formulation** Liquid in PBS containing 50% glycerol, 0.5% BSA and 0.02% sodium azide.

### Recommended Dilution Ratios

**WB 1:500-2000**

**IHC 1:50-300**

**ELISA 1:2000-20000**

### Basic Information

**Clonality** Polyclonal

### Immunogen Information

**Immunogen** Synthesized peptide derived from MGST2 . at AA range: 370-450

**Specificity** MGST2 Polyclonal Antibody detects endogenous levels of MGST2 protein.

### Target Information

**Gene name** MGST2

**Protein Name** Microsomal glutathione S-transferase 2

**Organism**

**Gene ID**

**UniProt ID**

Human

[4258;](#)

[Q99735;](#)

**Cellular Localization**

Endoplasmic reticulum membrane ; Multi-pass membrane protein . Microsome membrane ; Multi-pass membrane protein .

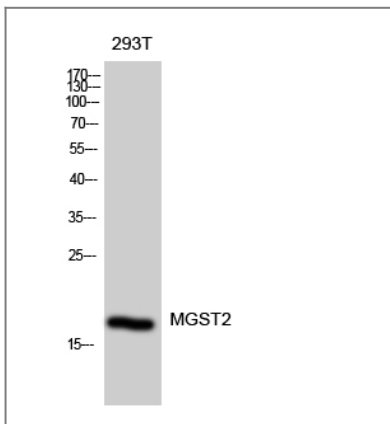
**Tissue specificity**

Liver, spleen, skeletal muscle, heart, adrenals, pancreas, prostate, testis, fetal liver, and fetal spleen. Very low expression in lung, brain, placenta and bone marrow (PubMed:8703034). Abundantly expressed in human umbilical vein endothelial cells (at protein level) (PubMed:11322876).

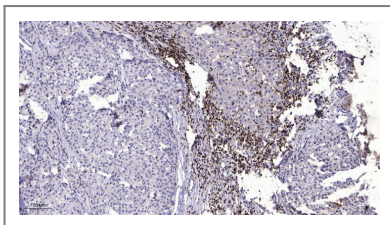
**Function**

Catalytic activity:RX + glutathione = HX + R-S-glutathione.,Function:Can catalyze the production of LTC4 from LTA4 and reduced glutathione. Can catalyze the conjugation of 1-chloro-2,4-dinitrobenzene with reduced glutathione.,similarity:Belongs to the MAPEG family.,subunit:Homotrimer.,tissue specificity:Liver, spleen, skeletal muscle, heart, adrenals, pancreas, prostate, testis, fetal liver, and fetal spleen. Very low expression in lung, brain, placenta and bone marrow.,

## Validation Data



Western Blot analysis of 293T cells using MGST2 Polyclonal Antibody diluted at 1:2000



Immunohistochemical analysis of paraffin-embedded human liver cancer. 1, Antibody was diluted at 1:200(4° overnight). 2, Tris-EDTA,pH9.0 was used for antigen retrieval. 3,Secondary antibody was diluted at 1:200(room temperature, 45min).

## Contact information

Orders: order.cn@immunoway.com  
Support: support.cn@immunoway.com  
Telephone: 400-8787-807(China)  
Website: http://www.immunoway.com.cn  
Address: 2200 Ringwood Ave San Jose, CA 95131 USA



Please scan the QR code  
to access additional  
product information:  
**MGST2 Rabbit pAb**

---

For Research Use Only. Not for Use in Diagnostic Procedures.

[Antibody](#) | [ELISA Kits](#) | [Protein](#) | [Reagents](#)