

MCT4 Rabbit pAb

CatalogNo: YT2685

| Key Features

Host Species

- Rabbit

Reactivity

- Human, Mouse, Rat

Applications

- WB, ELISA

MW

- 49kD (Observed)

Isotype

- IgG

| Recommended Dilution Ratios

WB 1:500-1:2000

ELISA 1:40000

Not yet tested in other applications.

| Storage

Storage*

-15°C to -25°C/1 year (Do not lower than -25°C)

Formulation

Liquid in PBS containing 50% glycerol, 0.5% BSA and 0.02% sodium azide.

| Basic Information

Clonality

Polyclonal

| Immunogen Information

Immunogen

The antiserum was produced against synthesized peptide derived from human MOT4. AA range: 233-282

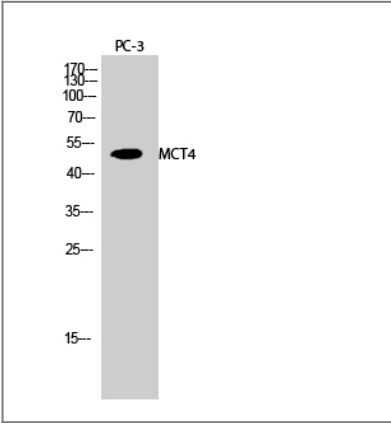
Specificity

MCT4 Polyclonal Antibody detects endogenous levels of MCT4 protein.

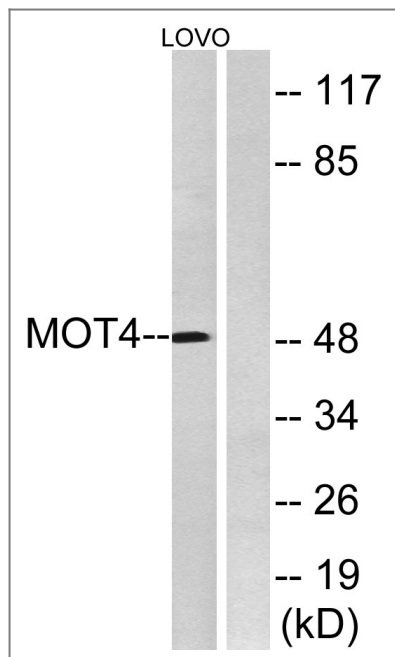
| Target Information

Gene name	SLC16A3		
Protein Name	Monocarboxylate transporter 4		
	Organism	Gene ID	UniProt ID
	Human	9123 ;	O15427 ;
	Mouse	80879 ;	P57787 ;
	Rat	80878 ;	O35910 ;
Cellular Localization	Cell membrane; Multi-pass membrane protein.		
Tissue specificity	Highly expressed in skeletal muscle.		
Function	Function:Proton-linked monocarboxylate transporter. Catalyzes the rapid transport across the plasma membrane of many monocarboxylates such as lactate, pyruvate, branched-chain oxo acids derived from leucine, valine and isoleucine, and the ketone bodies acetoacetate, beta-hydroxybutyrate and acetate.,similarity:Belongs to the major facilitator superfamily. Monocarboxylate porter (TC 2.A.1.13) family.,tissue specificity:Highly expressed in skeletal muscle.,		

| Validation Data



Western Blot analysis of PC-3 cells using MCT4 Polyclonal Antibody diluted at 1:500



Western blot analysis of lysates from LOVO cells, using MOT4 Antibody. The lane on the right is blocked with the synthesized peptide.

Contact information

Orders: order.cn@immunoway.com
 Support: support.cn@immunoway.com
 Telephone: 400-8787-807(China)
 Website: <http://www.immunoway.com.cn>
 Address: 2200 Ringwood Ave San Jose, CA 95131 USA



Please scan the QR code to access additional product information:
MCT4 Rabbit pAb

For Research Use Only. Not for Use in Diagnostic Procedures.

[Antibody](#) | [ELISA Kits](#) | [Protein](#) | [Reagents](#)