

MC5-R Rabbit pAb

CatalogNo: YT2676

Key Features

Host Species

- Rabbit

Reactivity

- Human, Mouse, Rat

Applications

- WB, IHC, IF

MW

- 40kD (Observed)

Isotype

- IgG

Recommended Dilution Ratios

WB 1:500-2000

IHC 1:50-300

IF 1:200-1:1000

Storage

Storage* -15°C to -25°C/1 year (Do not lower than -25°C)

Formulation Liquid in PBS containing 50% glycerol, 0.5% BSA and 0.02% sodium azide.

Basic Information

Clonality Polyclonal

Immunogen Information

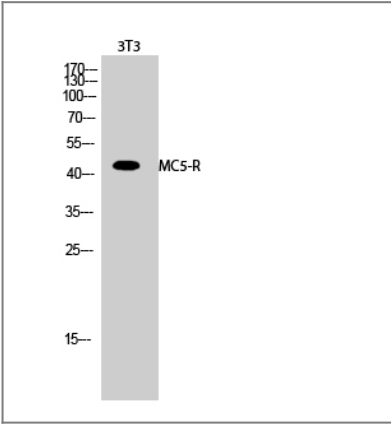
Immunogen The antiserum was produced against synthesized peptide derived from human MC5R. AA range: 271-320

Specificity MC5-R Polyclonal Antibody detects endogenous levels of MC5-R protein.

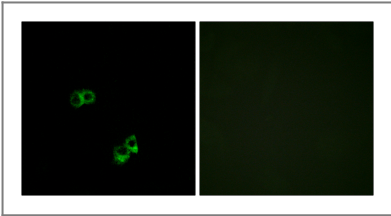
Target Information

Gene name	MC5R		
Protein Name	Melanocortin receptor 5		
	Organism	Gene ID	UniProt ID
	Human	4161 ;	P33032 ;
	Mouse		P41149 ;
	Rat	25726 ;	P35345 ;
Cellular Localization	Cell membrane; Multi-pass membrane protein.		
Tissue specificity	Expressed in the brain but not in the melanoma cells.		
Function	Function:Receptor for MSH (alpha, beta and gamma) and ACTH. The activity of this receptor is mediated by G proteins which activate adenylate cyclase. This receptor is a possible mediator of the immunomodulation properties of melanocortins.,online information:Melanocortin receptor entry,similarity:Belongs to the G-protein coupled receptor 1 family.,tissue specificity:Expressed in the brain but not in the melanoma cells.,		

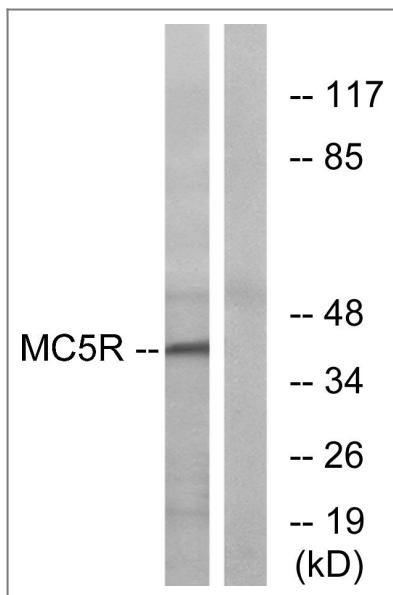
| Validation Data



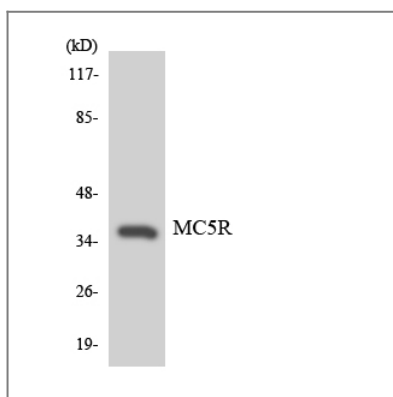
Western Blot analysis of 3T3 cells using MC5-R Polyclonal Antibody



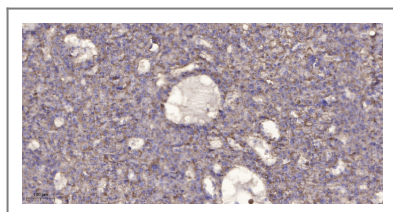
Immunofluorescence analysis of MCF7 cells, using MC5R Antibody. The picture on the right is blocked with the synthesized peptide.



Western blot analysis of lysates from K562 cells, using MC5R Antibody. The lane on the right is blocked with the synthesized peptide.



Western blot analysis of the lysates from HeLa cells using MC5R antibody.



Immunohistochemical analysis of paraffin-embedded human liver cancer. 1, Antibody was diluted at 1:200(4° overnight). 2, Tris-EDTA,pH9.0 was used for antigen retrieval. 3,Secondary antibody was diluted at 1:200(room temperature, 45min).

Contact information

Orders: order.cn@immunoway.com
 Support: support.cn@immunoway.com
 Telephone: 400-8787-807(China)
 Website: <http://www.immunoway.com.cn>
 Address: 2200 Ringwood Ave San Jose, CA 95131 USA



Please scan the QR code to access additional product information:
MC5-R Rabbit pAb