

## MC2-R Rabbit pAb

CatalogNo: YT2674

### Key Features

**Host Species**

- Rabbit

**Reactivity**

- Human, Mouse

**Applications**

- WB, IF, ELISA, IHC

**MW**

- 34kD (Observed)

**Isotype**

- IgG

### Recommended Dilution Ratios

**WB 1:500-2000****IHC 1:50-300****IF 1:200-1:1000****ELISA 1:2000-20000**

### Storage

**Storage\***

-15°C to -25°C/1 year (Do not lower than -25°C)

**Formulation**

Liquid in PBS containing 50% glycerol, 0.5% BSA and 0.02% sodium azide.

### Basic Information

**Clonality**

Polyclonal

### Immunogen Information

**Immunogen**

The antiserum was produced against synthesized peptide derived from human ACTHR. AA range: 248-297

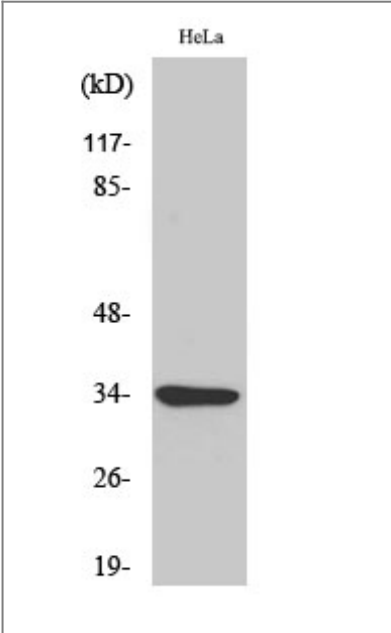
**Specificity**

MC2-R Polyclonal Antibody detects endogenous levels of MC2-R protein.

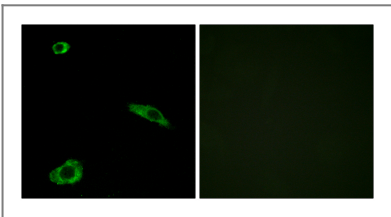
### Target Information

|                       |  |                        |                         |
|-----------------------|--|------------------------|-------------------------|
| Gene name             | MC2R   |                        |                         |
| Protein Name          | Adrenocorticotrophic hormone receptor  |                        |                         |
|                       | Organism   | Gene ID                | UniProt ID              |
|                       | Human  | <a href="#">4158;</a>  | <a href="#">Q01718;</a> |
|                       | Mouse  | <a href="#">17200;</a> | <a href="#">Q64326;</a> |
| Cellular Localization | Cell membrane; Multi-pass membrane protein.  |                        |                         |
| Tissue specificity    | Melanocytes and corticoadrenal tissue.   |                        |                         |
| Function              | Disease:Defects in MC2R are the cause of glucocorticoid deficiency type 1 (GCCD1) [MIM:202200]; also known as familial glucocorticoid deficiency type 1 (FGD1). GCCD1 is an autosomal recessive disorder due to congenital insensitivity or resistance to adrenocorticotropin (ACTH). It is characterized by progressive primary adrenal insufficiency, without mineralocorticoid deficiency.,Function:Receptor for ACTH. This receptor is mediated by G proteins (G(s)) which activate adenylate cyclase.,similarity:Belongs to the G-protein coupled receptor 1 family.,subunit:Interacts with FALP/MRAP.,tissue specificity:Melanocytes and corticoadrenal tissue., |                        |                         |

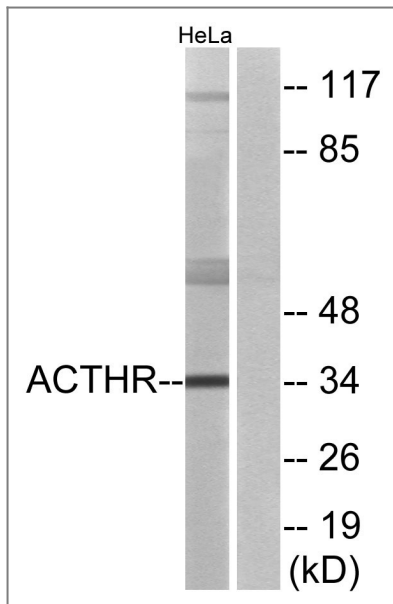
| Validation Data



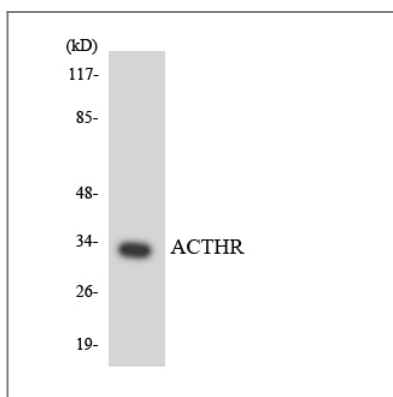
Western Blot analysis of various cells using MC2-R Polyclonal Antibody



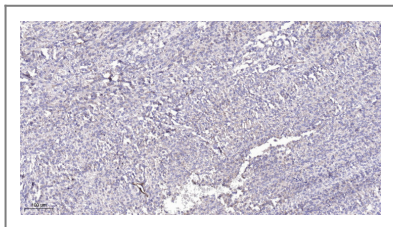
Immunofluorescence analysis of MCF7 cells, using ACTHR Antibody. The picture on the right is blocked with the synthesized peptide.



Western blot analysis of lysates from HeLa cells, using ACTHR Antibody. The lane on the right is blocked with the synthesized peptide.



Western blot analysis of the lysates from COLO205 cells using ACTHR antibody.



Immunohistochemical analysis of paraffin-embedded human Colon cancer. 1, Antibody was diluted at 1:200(4° overnight). 2, Tris-EDTA,pH9.0 was used for antigen retrieval. 3,Secondary antibody was diluted at 1:200(room temperature, 45min).

## Contact information

Orders: order.cn@immunoway.com  
 Support: support.cn@immunoway.com  
 Telephone: 400-8787-807(China)  
 Website: <http://www.immunoway.com.cn>  
 Address: 2200 Ringwood Ave San Jose, CA 95131 USA



Please scan the QR code to access additional product information:  
**MC2-R Rabbit pAb**