

## MAN1B1 Rabbit pAb

CatalogNo: YT2633

### Key Features

#### Host Species

- Rabbit

#### Reactivity

- Human,Rat,Mouse,

#### Applications

- WB,ELISA

#### MW

- 80kD (Observed)

#### Isotype

- IgG

### Recommended Dilution Ratios

**WB 1:500-1:2000**

**ELISA 1:10000**

**Not yet tested in other applications.**

### Storage

#### Storage\*

-15°C to -25°C/1 year(Do not lower than -25°C)

#### Formulation

Liquid in PBS containing 50% glycerol, 0.5% BSA and 0.02% sodium azide.

### Basic Information

#### Clonality

Polyclonal

### Immunogen Information

#### Immunogen

Synthesized peptide derived from MAN1B1 . at AA range: 100-180

#### Specificity

MAN1B1 Polyclonal Antibody detects endogenous levels of MAN1B1 protein.

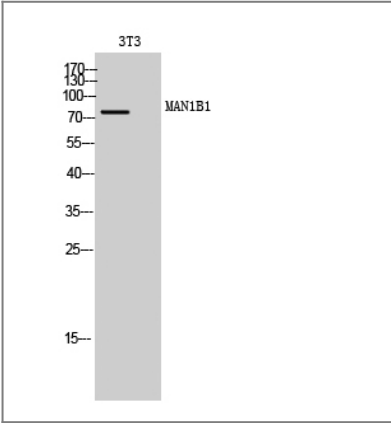
### Target Information

#### Gene name

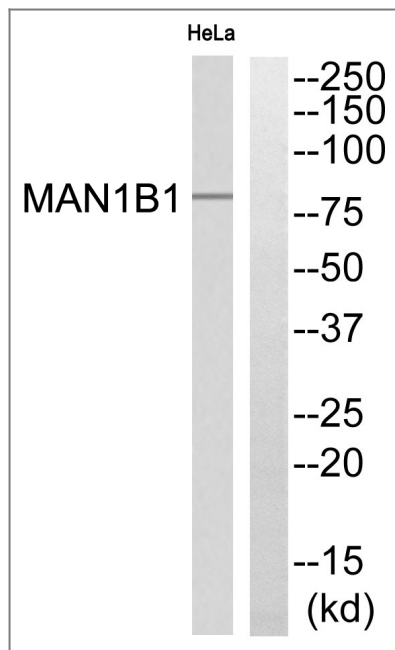
MAN1B1

<b>Protein Name</b>	Endoplasmic reticulum mannosyl-oligosaccharide 1,2-alpha-mannosidase		
	<b>Organism</b>	<b>Gene ID</b>	<b>UniProt ID</b>
	Human	<a href="#">11253</a> ;	<a href="#">Q9UKM7</a> ;
	Mouse		<a href="#">A2AJ15</a> ;
<b>Cellular Localization</b>	Endoplasmic reticulum membrane ; Single-pass type II membrane protein .		
<b>Tissue specificity</b>	Widely expressed.		
<b>Function</b>	Catalytic activity:Hydrolysis of the terminal (1->2)-linked alpha-D-mannose residues in the oligo-mannose oligosaccharide Man(9)(GlcNAc)(2).,cofactor:Calcium.,enzyme regulation:Inhibited by both 1-deoxymannojirimycin and kifunensine.,Function:Involved in the maturation of Asn-linked oligosaccharides. Trim a single alpha-1,2-linked mannose residue from Man(9)GlcNAc(2) to produce Man(8)GlcNAc(2). The only product is the Man(8)GlcNAc(2) isomer B, the form lacking the middle-arm terminal alpha 1,2-mannose. It may be involved in glycoprotein quality control since it is important to target misfolded glycoproteins for degradation.,pathway:Protein modification; protein glycosylation.,similarity:Belongs to the glycosyl hydrolase 47 family.,tissue specificity:Widely expressed.,		

Validation Data



Western Blot analysis of 3T3 cells using MAN1B1 Polyclonal Antibody



Western blot analysis of MAN1B1 Antibody. The lane on the right is blocked with the MAN1B1 peptide.

## Contact information

Orders: [order.cn@immunoway.com](mailto:order.cn@immunoway.com)  
 Support: [support.cn@immunoway.com](mailto:support.cn@immunoway.com)  
 Telephone: 400-8787-807(China)  
 Website: <http://www.immunoway.com.cn>  
 Address: 2200 Ringwood Ave San Jose, CA 95131 USA



Please scan the QR code to access additional product information:  
**MAN1B1 Rabbit pAb**

For Research Use Only. Not for Use in Diagnostic Procedures.

[Antibody](#) | [ELISA Kits](#) | [Protein](#) | [Reagents](#)