

MAGE-A5 Rabbit pAb

CatalogNo: YT2625

| Key Features

Host Species

- Rabbit

Reactivity

- Human

Applications

- WB,ELISA

MW

- 36kD (Observed)

Isotype

- IgG

| Recommended Dilution Ratios

WB 1:500-1:2000

ELISA 1:10000

Not yet tested in other applications.

| Storage

Storage* -15°C to -25°C/1 year(Do not lower than -25°C)

Formulation Liquid in PBS containing 50% glycerol, 0.5% BSA and 0.02% sodium azide.

| Basic Information

Clonality Polyclonal

| Immunogen Information

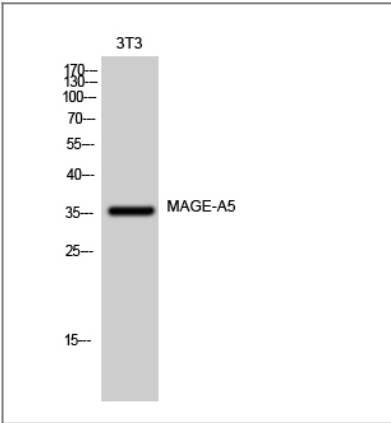
Immunogen The antiserum was produced against synthesized peptide derived from human MAGEA5. AA range:68-117

Specificity MAGE-A5 Polyclonal Antibody detects endogenous levels of MAGE-A5 protein.

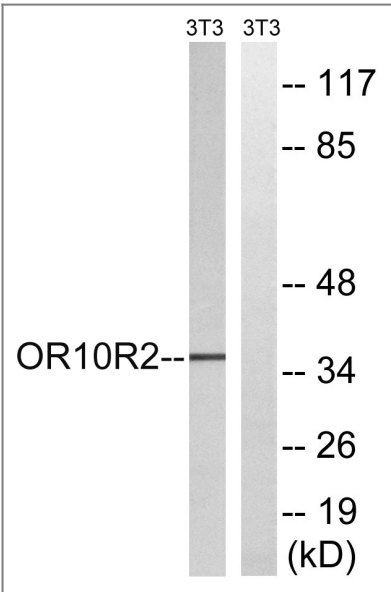
| Target Information

| | | | |
|--------------------|--|------------------------|--------------------------|
| Gene name | MAGEA5 | | |
| Protein Name | Melanoma-associated antigen 5 | | |
| | Organism | Gene ID | UniProt ID |
| | Human | 4104 ; | P43359 ; |
| Tissue specificity | Expressed in many tumors of several types, such as melanoma, head and neck squamous cell carcinoma, lung carcinoma and breast carcinoma, but not in normal tissues except for testes. | | |
| Function | Function:Not known, though may play a role tumor transformation or progression.,similarity:Contains 1 MAGE domain.,tissue specificity:Expressed in many tumors of several types, such as melanoma, head and neck squamous cell carcinoma, lung carcinoma and breast carcinoma, but not in normal tissues except for testes., | | |

| Validation Data



Western Blot analysis of 3T3 cells using MAGE-A5 Polyclonal Antibody



Western blot analysis of lysates from NIH/3T3 cells, using MAGEA5 Antibody. The lane on the right is blocked with the synthesized peptide.

| Contact information

Orders: order.cn@immunoway.com
Support: support.cn@immunoway.com
Telephone: 400-8787-807(China)
Website: <http://www.immunoway.com.cn>
Address: 2200 Ringwood Ave San Jose, CA 95131 USA



Please scan the QR code
to access additional
product information:
**MAGE-A5 Rabbit
pAb**

For Research Use Only. Not for Use in Diagnostic Procedures.

[Antibody](#) | [ELISA Kits](#) | [Protein](#) | [Reagents](#)