

mAChR M4 Rabbit pAb

CatalogNo: YT2613

| Key Features

Host Species

- Rabbit

Reactivity

- Human, Mouse, Rat

Applications

- WB, IF, ELISA

MW

- 53kD (Observed)

Isotype

- IgG

| Recommended Dilution Ratios

WB 1:500-1:2000

IF 1:200-1:1000

ELISA 1:10000

Not yet tested in other applications.

| Storage

Storage*

-15°C to -25°C/1 year (Do not lower than -25°C)

Formulation

Liquid in PBS containing 50% glycerol, 0.5% BSA and 0.02% sodium azide.

| Basic Information

Clonality

Polyclonal

| Immunogen Information

Immunogen

The antiserum was produced against synthesized peptide derived from human CHRM4. AA range: 236-285

Specificity

mAChR M4 Polyclonal Antibody detects endogenous levels of mAChR M4 protein.

| Target Information

Gene name CHRM4

Protein Name Muscarinic acetylcholine receptor M4

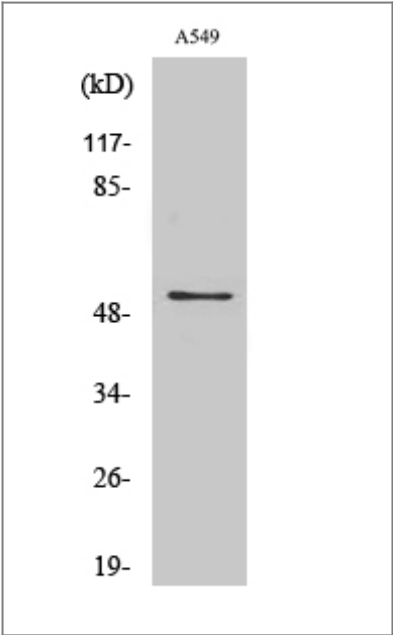
Organism	Gene ID	UniProt ID
Human	1132 ;	P08173 ;
Mouse	12672 ;	P32211 ;
Rat	25111 ;	P08485 ;

Cellular Localization Cell membrane; Multi-pass membrane protein. Cell junction, synapse, postsynaptic cell membrane; Multi-pass membrane protein.

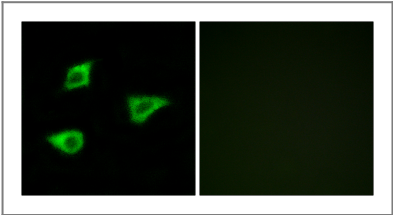
Tissue specificity Brain,

Function Function:The muscarinic acetylcholine receptor mediates various cellular responses, including inhibition of adenylate cyclase, breakdown of phosphoinositides and modulation of potassium channels through the action of G proteins. Primary transducing effect is inhibition of adenylate cyclase.,similarity:Belongs to the G-protein coupled receptor 1 family.,

Validation Data



Western Blot analysis of various cells using mACHR M4 Polyclonal Antibody



Immunofluorescence analysis of LOVO cells, using CHRM4 Antibody. The picture on the right is blocked with the synthesized peptide.

| Contact information

Orders: order.cn@immunoway.com
Support: support.cn@immunoway.com
Telephone: 400-8787-807(China)
Website: <http://www.immunoway.com.cn>
Address: 2200 Ringwood Ave San Jose, CA 95131 USA



Please scan the QR code
to access additional
product information:
**mAChR M4 Rabbit
pAb**

For Research Use Only. Not for Use in Diagnostic Procedures.

[Antibody](#) | [ELISA Kits](#) | [Protein](#) | [Reagents](#)