

## LZK Rabbit pAb

CatalogNo: YT2610

### Key Features

#### Host Species

- Rabbit

#### Reactivity

- Human,Mouse,Rat

#### Applications

- WB,IHC,IF,ELISA

#### MW

- 108kD (Observed)

#### Isotype

- IgG

### Storage

**Storage\*** -15°C to -25°C/1 year(Do not lower than -25°C)

**Formulation** Liquid in PBS containing 50% glycerol, 0.5% BSA and 0.02% sodium azide.

### Recommended Dilution Ratios

**WB 1:500-1:2000**

**IHC 1:100-1:300**

**ELISA 1:20000**

**IF 1:50-200**

### Basic Information

**Clonality** Polyclonal

### Immunogen Information

**Immunogen** The antiserum was produced against synthesized peptide derived from human M3K13. AA range:151-200

**Specificity** LZK Polyclonal Antibody detects endogenous levels of LZK protein.

### Target Information

**Gene name** MAP3K13

**Protein Name** Mitogen-activated protein kinase kinase kinase 13

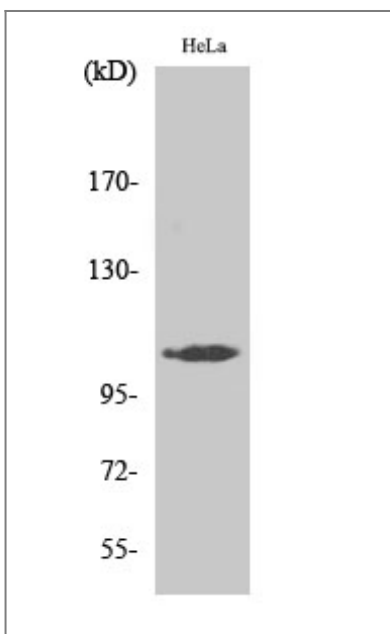
Organism	Gene ID	UniProt ID
Human	<a href="#">9175;</a>	<a href="#">O43283;</a>
Mouse	<a href="#">71751;</a>	<a href="#">Q1HKZ5;</a>

**Cellular Localization** Cytoplasm . Membrane ; Peripheral membrane protein .

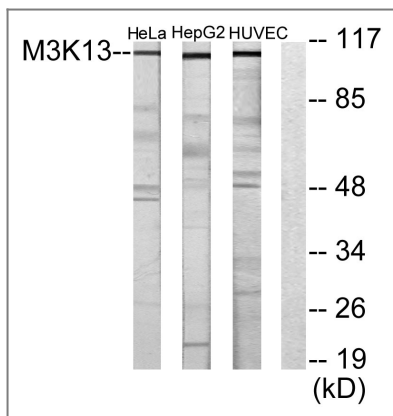
**Tissue specificity** Expressed in the adult brain, liver, placenta and pancreas, with expression strongest in the pancreas.

**Function** Catalytic activity:ATP + a protein = ADP + a phosphoprotein.,cofactor:Magnesium.,enzyme regulation:Activated by autophosphorylation and homodimerization.,Function:Activates the JUN N-terminal pathway through activation of the MAP kinase kinase MAP2K7. Acts synergistically with PRDX3 to regulate the activation of NF-kappa-B in the cytosol. This activation is kinase-dependent and involves activating the IKK complex, the IKBKB-containing complex that phosphorylates inhibitors of NF-kappa-B.,PTM:Autophosphorylated on serine and threonine residues.,sequence Caution:Translated as Tyr.,sequence Caution:Wrong choice of CDS.,similarity:Belongs to the protein kinase superfamily. STE Ser/Thr protein kinase family. MAP kinase kinase kinase subfamily.,similarity:Contains 1 protein kinase domain.,subunit:Homodimer; forms dimers through the leucine-zipper motif. Interacts with the C-terminus of MAPK8IP1 through the kinase catalytic domain. Binds PRDX3. Associates with the IKK complex through the kinase domain.,tissue specificity:Expressed in the adult brain, liver, placenta and pancreas, with expression strongest in the pancreas.,

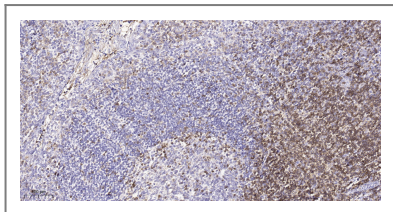
## Validation Data



Western Blot analysis of HepG2 cells using LZK Polyclonal Antibody



Western blot analysis of lysates from HeLa, HUVEC, and HepG2 cells, using M3K13 Antibody. The lane on the right is blocked with the synthesized peptide.



Immunohistochemical analysis of paraffin-embedded human tonsil. 1, Tris-EDTA, pH 9.0 was used for antigen retrieval. 2 Antibody was diluted at 1:200 (4° overnight). 3, Secondary antibody was diluted at 1:200 (room temperature, 45min).

## Contact information

Orders: [order.cn@immunoway.com](mailto:order.cn@immunoway.com)  
 Support: [support.cn@immunoway.com](mailto:support.cn@immunoway.com)  
 Telephone: 400-8787-807 (China)  
 Website: <http://www.immunoway.com.cn>  
 Address: 2200 Ringwood Ave San Jose, CA 95131 USA



Please scan the QR code to access additional product information:  
**LZK Rabbit pAb**

For Research Use Only. Not for Use in Diagnostic Procedures.

[Antibody](#) | [ELISA Kits](#) | [Protein](#) | [Reagents](#)