

## LT $\beta$ R Rabbit pAb

CatalogNo: YT2602

### Key Features

#### Host Species

- Rabbit

#### Reactivity

- Human, Mouse

#### Applications

- WB, IF, ELISA

#### MW

- 50kD (Observed)

#### Isotype

- IgG

### Storage

**Storage\*** -15°C to -25°C/1 year (Do not lower than -25°C)

**Formulation** Liquid in PBS containing 50% glycerol, 0.5% BSA and 0.02% sodium azide.

### Recommended Dilution Ratios

**WB 1:500-1:2000**

**IF 1:200-1:1000**

**ELISA 1:40000**

**Not yet tested in other applications.**

### Basic Information

**Clonality** Polyclonal

### Immunogen Information

**Immunogen** The antiserum was produced against synthesized peptide derived from human LTBR. AA range: 11-60

**Specificity** LT $\beta$ R Polyclonal Antibody detects endogenous levels of LT $\beta$ R protein.

### Target Information

**Gene name** LTBR

**Protein Name** Tumor necrosis factor receptor superfamily member 3

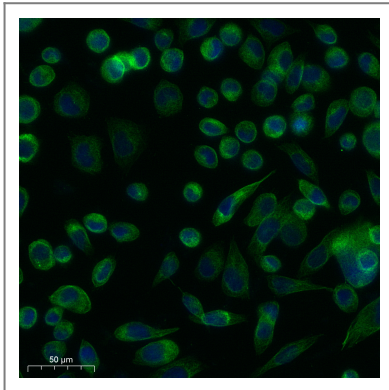
Organism	Gene ID	UniProt ID
Human	<a href="#">4055</a> ;	<a href="#">P36941</a> ;
Mouse	<a href="#">17000</a> ;	<a href="#">P50284</a> ;

**Cellular Localization** Membrane; Single-pass type I membrane protein.

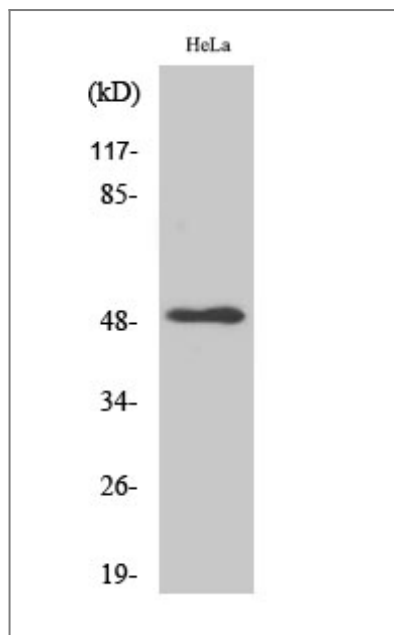
**Tissue specificity** Liver,Lung,

**Function** Function:Receptor for the heterotrimeric lymphotoxin containing LTA and LTB, and for TNFS14/LIGHT. Promotes apoptosis via TRAF3 and TRAF5. May play a role in the development of lymphoid organs.,similarity:Contains 4 TNFR-Cys repeats.,subunit:Self-associates. Associates with TRAF3, TRAF4 and TRAF5. Interacts with HCV core protein.,

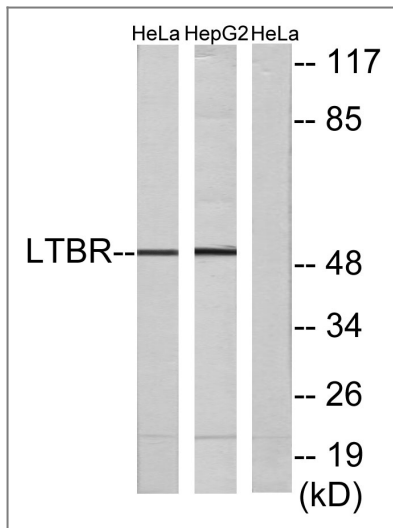
## Validation Data



Immunofluorescence analysis of Siha cell. 1,primary Antibody was diluted at 1:100(4°C overnight). 2, Goat Anti Rabbit IgG (H&L) - AFluor 488 Secondary antibody (catalog No:RS3211) was diluted at 1:500(room temperature, 50min).



Western Blot analysis of various cells using LTβR Polyclonal Antibody



Western blot analysis of lysates from HeLa and HepG2 cells, using LTBR Antibody. The lane on the right is blocked with the synthesized peptide.

## Contact information

Orders: [order.cn@immunoway.com](mailto:order.cn@immunoway.com)  
 Support: [support.cn@immunoway.com](mailto:support.cn@immunoway.com)  
 Telephone: 400-8787-807(China)  
 Website: <http://www.immunoway.com.cn>  
 Address: 2200 Ringwood Ave San Jose, CA 95131 USA



Please scan the QR code to access additional product information:  
**LTβR Rabbit pAb**

For Research Use Only. Not for Use in Diagnostic Procedures.

[Antibody](#) | [ELISA Kits](#) | [Protein](#) | [Reagents](#)