

LONP2 Rabbit pAb

CatalogNo: YT2579

| Key Features

Host Species

- Rabbit

Reactivity

- Human, Mouse, Rat

Applications

- WB, IHC, IF, ELISA

MW

- 95kD (Observed)

Isotype

- IgG

| Recommended Dilution Ratios

WB 1:500-1:2000

IHC 1:100-1:300

ELISA 1:40000

IF 1:50-200

| Storage

Storage*

-15°C to -25°C/1 year (Do not lower than -25°C)

Formulation

Liquid in PBS containing 50% glycerol, 0.5% BSA and 0.02% sodium azide.

| Basic Information

Clonality

Polyclonal

| Immunogen Information

Immunogen

The antiserum was produced against synthesized peptide derived from human LONP2. AA range: 780-829

Specificity

LONP2 Polyclonal Antibody detects endogenous levels of LONP2 protein.

| Target Information

Gene name LONP2

Protein Name Lon protease homolog 2 peroxisomal

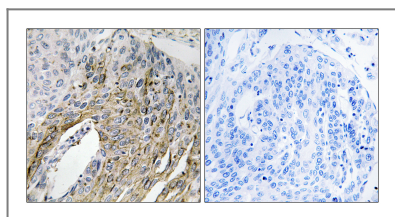
Organism	Gene ID	UniProt ID
Human	83752 ;	Q86WA8 ;
Mouse	66887 ;	Q9DBN5 ;
Rat		Q3MIB4 ;

Cellular Localization Peroxisome matrix .

Tissue specificity Widely expressed, with high levels in the liver, kidney and pancreas.

Function Function:Probable serine protease which may be involved in peroxisome biogenesis.,similarity:Belongs to the peptidase S16 family.,

| Validation Data



Immunohistochemistry analysis of paraffin-embedded human lung carcinoma tissue, using LONP2 Antibody. The picture on the right is blocked with the synthesized peptide.

| Contact information

Orders: order.cn@immunoway.com
Support: support.cn@immunoway.com
Telephone: 400-8787-807(China)
Website: <http://www.immunoway.com.cn>
Address: 2200 Ringwood Ave San Jose, CA 95131 USA



Please scan the QR code to access additional product information:
LONP2 Rabbit pAb

For Research Use Only. Not for Use in Diagnostic Procedures.

[Antibody](#) | [ELISA Kits](#) | [Protein](#) | [Reagents](#)