

LOK Rabbit pAb

CatalogNo: YT2578

Key Features

Host Species

- Rabbit

Reactivity

- Human,Rat,Mouse,

Applications

- WB,ELISA,IHC

MW

- 120kD (Observed)

Isotype

- IgG

Recommended Dilution Ratios

WB 1:500-2000

IHC 1:50-300

ELISA 1:2000-20000

Storage

Storage* -15°C to -25°C/1 year(Do not lower than -25°C)

Formulation Liquid in PBS containing 50% glycerol, 0.5% BSA and 0.02% sodium azide.

Basic Information

Clonality Polyclonal

Immunogen Information

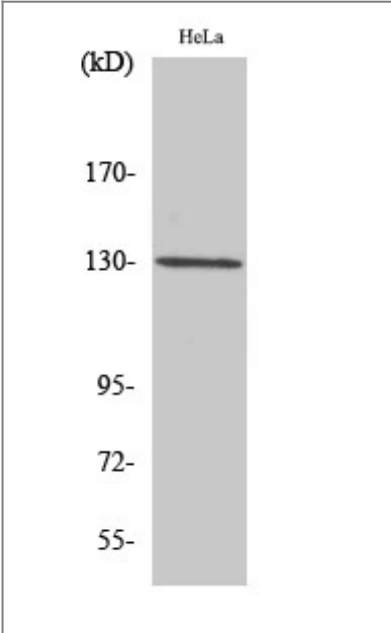
Immunogen The antiserum was produced against synthesized peptide derived from human STK10. AA range:491-540

Specificity LOK Polyclonal Antibody detects endogenous levels of LOK protein.

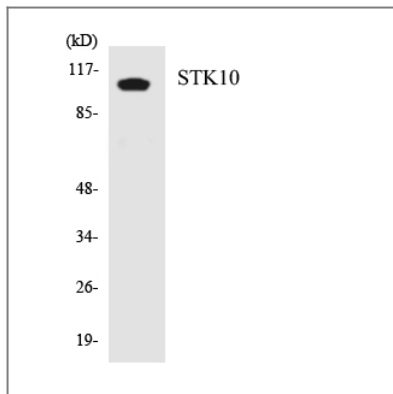
Target Information

Gene name	STK10		
Protein Name	Serine/threonine-protein kinase 10		
	Organism	Gene ID	UniProt ID
	Human	6793 ;	O94804 ;
	Mouse		O55098 ;
Cellular Localization	Cell membrane ; Peripheral membrane protein .		
Tissue specificity	Highly expressed in rapidly proliferating tissues (spleen, placenta, and peripheral blood leukocytes). Also expressed in brain, heart, skeletal muscle, colon, thymus, kidney, liver, small intestine and lung.		
Function	Catalytic activity:ATP + a protein = ADP + a phosphoprotein.,Function:Can act on substrates such as myelin basic protein and histone 2A on serine and threonine residues.,PTM:Autophosphorylated.,similarity:Belongs to the protein kinase superfamily.,similarity:Belongs to the protein kinase superfamily. STE Ser/Thr protein kinase family. STE20 subfamily.,similarity:Contains 1 protein kinase domain.,tissue specificity:Expressed predominantly in lymphoid organs.,		

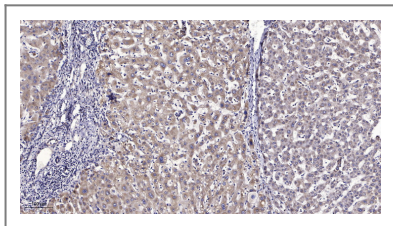
Validation Data



Western Blot analysis of HuvEc cells using LOK Polyclonal Antibody



Western blot analysis of the lysates from HT-29 cells using STK10 antibody.



Immunohistochemical analysis of paraffin-embedded human liver cancer. 1, Antibody was diluted at 1:200(4° overnight). 2, Tris-EDTA,pH9.0 was used for antigen retrieval. 3,Secondary antibody was diluted at 1:200(room temperature, 45min).

Contact information

Orders: order.cn@immunoway.com
 Support: support.cn@immunoway.com
 Telephone: 400-8787-807(China)
 Website: <http://www.immunoway.com.cn>
 Address: 2200 Ringwood Ave San Jose, CA 95131 USA



Please scan the QR code
 to access additional
 product information:
LOK Rabbit pAb

For Research Use Only. Not for Use in Diagnostic Procedures.

[Antibody](#) | [ELISA Kits](#) | [Protein](#) | [Reagents](#)