

LAP1B Rabbit pAb

CatalogNo: YT2534

Key Features

Host Species

- Rabbit

Reactivity

- Human, Mouse, Rat

Applications

- WB, ELISA, IHC

MW

- 66kD (Observed)

Isotype

- IgG

Storage

Storage* -15°C to -25°C/1 year (Do not lower than -25°C)

Formulation Liquid in PBS containing 50% glycerol, 0.5% BSA and 0.02% sodium azide.

Recommended Dilution Ratios

WB 1:500-2000

IHC 1:50-300

ELISA 1:2000-20000

Basic Information

Clonality Polyclonal

Immunogen Information

Immunogen The antiserum was produced against synthesized peptide derived from human TOR1AIP1. AA range:431-480

Specificity LAP1B Polyclonal Antibody detects endogenous levels of LAP1B protein.

Target Information

Gene name TOR1AIP1

Protein Name Torsin-1A-interacting protein 1

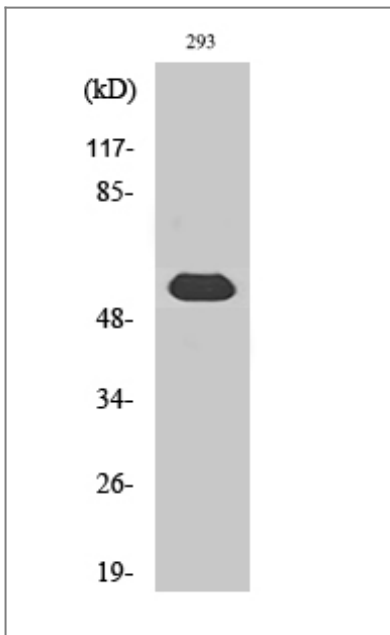
Organism	Gene ID	UniProt ID
Human	26092;	Q5JTV8;
Mouse		Q921T2;

Cellular Localization Nucleus inner membrane ; Single-pass membrane protein .

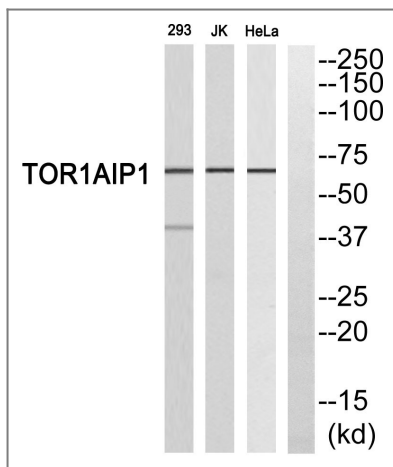
Tissue specificity Expressed in muscle, liver and kidney.

Function Function: Binds to A- and B-type lamins. Possible role in membrane attachment and assembly of the nuclear lamina.,PTM: Phosphorylated upon DNA damage, probably by ATM or ATR.,similarity: Belongs to the TOR1AIP family.,subunit: Interacts with TOR1A.,

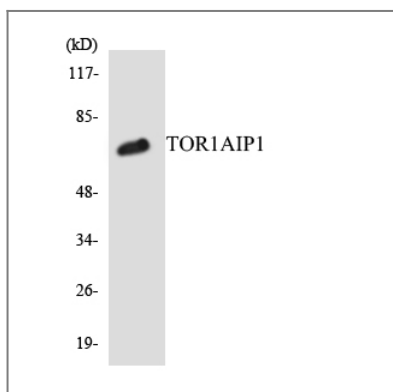
Validation Data



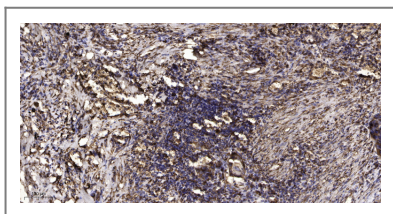
Western Blot analysis of various cells using LAP1B Polyclonal Antibody cells nucleus extracted by Minute TM Cytoplasmic and Nuclear Fractionation kit (SC-003, Invent biotech, MN, USA).



Western blot analysis of TOR1AIP1 Antibody. The lane on the right is blocked with the TOR1AIP1 peptide.



Western blot analysis of the lysates from COLO205 cells using TOR1AIP1 antibody.



Immunohistochemical analysis of paraffin-embedded human Squamous cell carcinoma of lung. 1, Antibody was diluted at 1:200(4° overnight). 2, Tris-EDTA,pH9.0 was used for antigen retrieval. 3,Secondary antibody was diluted at 1:200(room temperature, 45min).

Contact information

Orders: order.cn@immunoway.com
 Support: support.cn@immunoway.com
 Telephone: 400-8787-807(China)
 Website: <http://www.immunoway.com.cn>
 Address: 2200 Ringwood Ave San Jose, CA 95131 USA



Please scan the QR code to access additional product information:
LAP1B Rabbit pAb