

## Laminin $\gamma$ -1 Rabbit pAb

CatalogNo: YT2531

Orthogonal Validated 

### Key Features

#### Host Species

- Rabbit

#### Reactivity

- Human, Mouse, Rat, Monkey, Cat

#### Applications

- WB, IHC, IF, ELISA

#### MW

- 178kD (Observed)

#### Isotype

- IgG

### Recommended Dilution Ratios

**WB 1:500-1:2000****IHC 1:100-1:300****IF 1:200-1:1000****ELISA 1:40000****Not yet tested in other applications.**

### Storage

**Storage\***

-15°C to -25°C/1 year(Do not lower than -25°C)

**Formulation**

Liquid in PBS containing 50% glycerol, 0.5% BSA and 0.02% sodium azide.

### Basic Information

**Clonality**

Polyclonal

### Immunogen Information

**Immunogen**

The antiserum was produced against synthesized peptide derived from human LAMC1. AA range:1451-1500

**Specificity**Laminin  $\gamma$ -1 Polyclonal Antibody detects endogenous levels of Laminin  $\gamma$ -1 protein.

## | Target Information

**Gene name** LAMC1

**Protein Name** Laminin subunit gamma-1

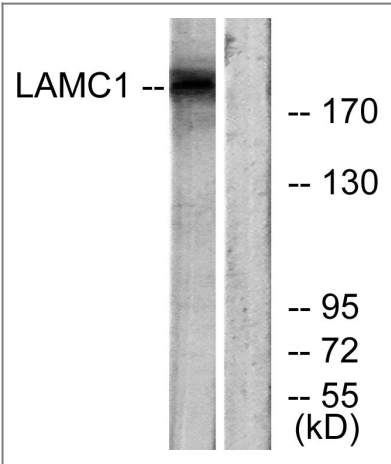
Organism	Gene ID	UniProt ID
Human	<a href="#">3915</a> ;	<a href="#">P11047</a> ;
Mouse		<a href="#">P02468</a> ;

**Cellular Localization** Secreted, extracellular space, extracellular matrix, basement membrane.

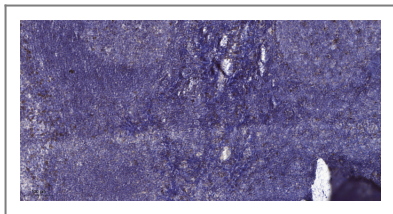
**Tissue specificity** Found in the basement membranes (major component).

**Function** Domain:Domains VI and IV are globular.,Domain:The alpha-helical domains I and II are thought to interact with other laminin chains to form a coiled coil structure.,Function:Binding to cells via a high affinity receptor, laminin is thought to mediate the attachment, migration and organization of cells into tissues during embryonic development by interacting with other extracellular matrix components.,similarity:Contains 1 laminin IV type A domain.,similarity:Contains 1 laminin N-terminal domain.,similarity:Contains 11 laminin EGF-like domains.,subunit:Laminin is a complex glycoprotein, consisting of three different polypeptide chains (alpha, beta, gamma), which are bound to each other by disulfide bonds into a cross-shaped molecule comprising one long and three short arms with globules at each end. Gamma-1 is a subunit of laminin-1 (EHS laminin), laminin-2 (merosin), laminin-3 (S-laminin), laminin-4 (S-merosin), laminin-6 (K-laminin) and laminin-7 (KS-laminin).,tissue specificity:Found in the basement membranes (major component).,

## | Validation Data



Western blot analysis of lysates from HUVEC cells, using LAMC1 Antibody. The lane on the right is blocked with the synthesized peptide.



Immunohistochemical analysis of paraffin-embedded human tonsil. 1, Antibody was diluted at 1:200(4° overnight). 2, Tris-EDTA,pH9.0 was used for antigen retrieval. 3,Secondary antibody was diluted at 1:200(room temperature, 30min).

## | Contact information

Orders: [order.cn@immunoway.com](mailto:order.cn@immunoway.com)  
Support: [support.cn@immunoway.com](mailto:support.cn@immunoway.com)  
Telephone: 400-8787-807(China)  
Website: <http://www.immunoway.com.cn>  
Address: 2200 Ringwood Ave San Jose, CA 95131 USA



Please scan the QR code  
to access additional  
product information:  
**Laminin γ-1 Rabbit  
pAb**

---

For Research Use Only. Not for Use in Diagnostic Procedures.

[Antibody](#) | [ELISA Kits](#) | [Protein](#) | [Reagents](#)