

Laminin α -5 Rabbit pAb

CatalogNo: YT2527

| Key Features

Host Species

- Rabbit

Reactivity

- Human, Mouse

Applications

- WB, IHC, IF, ELISA

MW

- 400kD (Observed)

Isotype

- IgG

| Recommended Dilution Ratios

WB 1:500-1:2000

IHC: 1:100-300

ELISA 1:20000

IF 1:100-300

Not yet tested in other applications.

| Storage

Storage* -15°C to -25°C/1 year (Do not lower than -25°C)

Formulation Liquid in PBS containing 50% glycerol, 0.5% BSA and 0.02% sodium azide.

| Basic Information

Clonality Polyclonal

| Immunogen Information

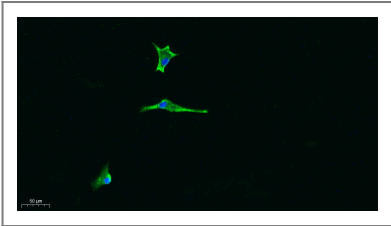
Immunogen The antiserum was produced against synthesized peptide derived from human LAMA5. AA range: 2381-2430

Specificity Laminin α -5 Polyclonal Antibody detects endogenous levels of Laminin α -5 protein.

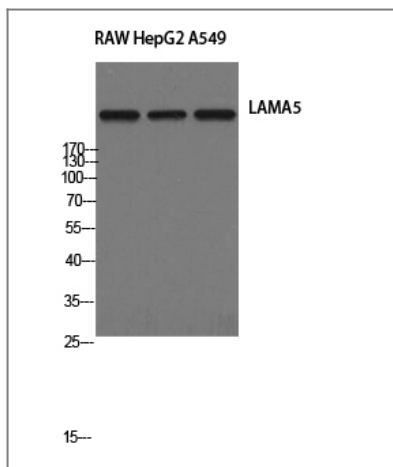
| Target Information

Gene name	LAMA5		
Protein Name	Laminin subunit alpha-5		
	Organism	Gene ID	UniProt ID
	Human	3911 ;	O15230 ;
	Mouse	16776 ;	Q61001 ;
Cellular Localization	Secreted, extracellular space, extracellular matrix, basement membrane. Major component.		
Tissue specificity	Expressed in heart, lung, kidney, skeletal muscle, pancreas, retina and placenta. Little or no expression in brain and liver.		
Function	Domain:Domain G is globular and is part of the major cell-binding site located in the long arm of the laminin heterotrimer.,Function:Binding to cells via a high affinity receptor, laminin is thought to mediate the attachment, migration and organization of cells into tissues during embryonic development by interacting with other extracellular matrix components.,similarity:Contains 1 laminin IV type A domain.,similarity:Contains 1 laminin N-terminal domain.,similarity:Contains 22 laminin EGF-like domains.,similarity:Contains 5 laminin G-like domains.,subcellular location:Major component.,subunit:Laminin-15 complex is an heterotrimer composed of three chains (alpha-5/beta-2/gamma-3) which are bound to each other by disulfide bonds into a cross-shaped molecule comprising one long and three short arms with globules at each end.,tissue specificity:Expressed in heart, lung, kidney, skeletal muscle, pancreas, retina and placenta. Little or no expression in brain and liver.,		

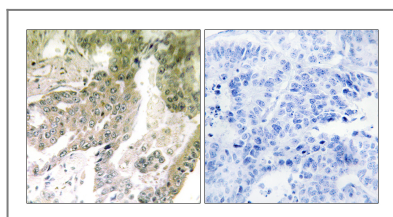
| Validation Data



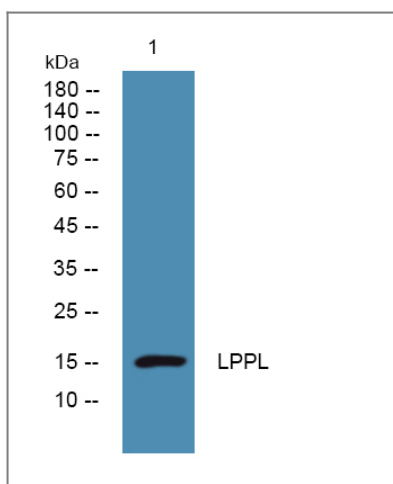
Immunofluorescence analysis of A549. 1,primary Antibody was diluted at 1:200(4°C overnight). 2, Goat Anti Rabbit IgG (H&L) - Alexa Fluor 488 Secondary antibody was diluted at 1:1000(room temperature, 50min).3, DAPI(blue) 10min.



Western Blot analysis of RAW HepG2 A549 cells using Laminin α -5 Polyclonal Antibody



Immunohistochemistry analysis of paraffin-embedded human lung carcinoma tissue, using LAMA5 Antibody. The picture on the right is blocked with the synthesized peptide.



Western blot analysis of lysates from DU145 cells, primary antibody was diluted at 1:1000, 4° over night

Contact information

Orders: order.cn@immunoway.com
 Support: support.cn@immunoway.com
 Telephone: 400-8787-807(China)
 Website: <http://www.immunoway.com.cn>
 Address: 2200 Ringwood Ave San Jose, CA 95131 USA



Please scan the QR code
 to access additional
 product information:
**Laminin α -5 Rabbit
 pAb**