

KOX4 Rabbit pAb

CatalogNo: YT2492

| Key Features

Host Species

- Rabbit

Reactivity

- Human, Mouse

Applications

- IHC, IF, ELISA

MW

- 78kD (Calculated)

Isotype

- IgG

| Recommended Dilution Ratios

IHC 1:100-1:300

IF 1:200-1:1000

ELISA 1:20000

Not yet tested in other applications.

| Storage

Storage*

-15°C to -25°C/1 year (Do not lower than -25°C)

Formulation

Liquid in PBS containing 50% glycerol, 0.5% BSA and 0.02% sodium azide.

| Basic Information

Clonality

Polyclonal

| Immunogen Information

Immunogen

The antiserum was produced against synthesized peptide derived from human ZNF7. AA range: 41-90

Specificity

KOX4 Polyclonal Antibody detects endogenous levels of KOX4 protein.

| Target Information

Gene name ZNF7

Protein Name Zinc finger protein 7

Organism

Gene ID

UniProt ID

Human

[7553;](#)

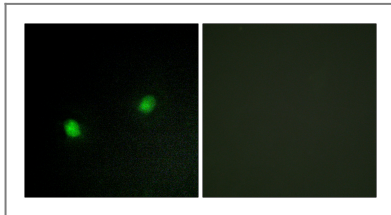
[P17097;](#)

Cellular Localization Nucleus .

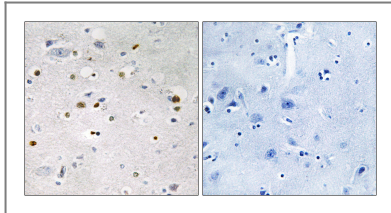
Tissue specificity Ubiquitously present in many human cell lines of different embryological derivation.

Function Function:May be involved in transcriptional regulation.,similarity:Belongs to the krueppel C2H2-type zinc-finger protein family.,similarity:Contains 1 KRAB domain.,similarity:Contains 15 C2H2-type zinc fingers.,tissue specificity:Ubiquitously present in many human cell lines of different embryological derivation.,

Validation Data



Immunofluorescence analysis of HeLa cells, using ZNF7 Antibody. The picture on the right is blocked with the synthesized peptide.



Immunohistochemistry analysis of paraffin-embedded human brain tissue, using ZNF7 Antibody. The picture on the right is blocked with the synthesized peptide.

Contact information

Orders: order.cn@immunoway.com
Support: support.cn@immunoway.com
Telephone: 400-8787-807(China)
Website: <http://www.immunoway.com.cn>
Address: 2200 Ringwood Ave San Jose, CA 95131 USA



Please scan the QR code to access additional product information:
KOX4 Rabbit pAb