

## KEPI Rabbit pAb

CatalogNo: YT2464

### | Key Features

#### Host Species

- Rabbit

#### Reactivity

- Human, Mouse, Rat

#### Applications

- WB, IHC, IF, ELISA

#### MW

- 20kD (Observed)

#### Isotype

- IgG

### | Recommended Dilution Ratios

**WB 1:500-1:2000**

**IHC 1:100-1:300**

**IF 1:200-1:1000**

**ELISA 1:20000**

**Not yet tested in other applications.**

### | Storage

**Storage\*** -15°C to -25°C/1 year (Do not lower than -25°C)

**Formulation** Liquid in PBS containing 50% glycerol, 0.5% BSA and 0.02% sodium azide.

### | Basic Information

**Clonality** Polyclonal

### | Immunogen Information

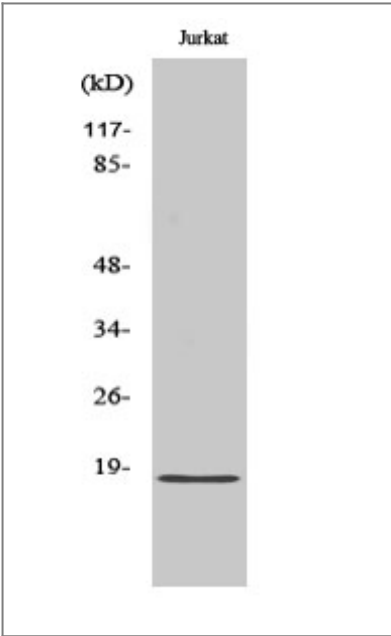
**Immunogen** The antiserum was produced against synthesized peptide derived from human PPP1R14C. AA range: 51-100

**Specificity** KEPI Polyclonal Antibody detects endogenous levels of KEPI protein.

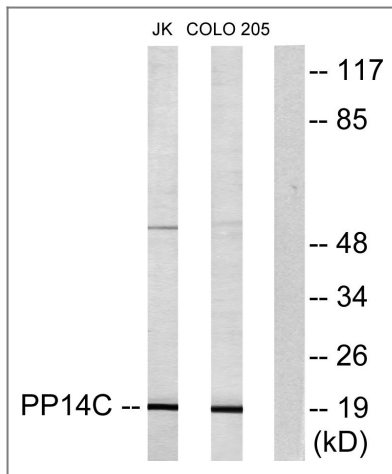
## Target Information

Gene name	PPP1R14C		
Protein Name	Protein phosphatase 1 regulatory subunit 14C		
	Organism	Gene ID	UniProt ID
	Human	<a href="#">81706</a> ;	<a href="#">Q8TAE6</a> ;
	Mouse	<a href="#">76142</a> ;	<a href="#">Q8R4S0</a> ;
	Rat	<a href="#">171010</a> ;	<a href="#">Q8R4R9</a> ;
Cellular Localization	Cytoplasm . Membrane ; Peripheral membrane protein .		
Tissue specificity	Detected in breast cancer.		
Function	Function:Inhibitor of PPP1CA. Has over 600-fold higher inhibitory activity when phosphorylated, creating a molecular switch for regulating the phosphorylation status of PPP1CA substrates and smooth muscle contraction.,similarity:Belongs to the PP1 inhibitor family.,tissue specificity:Detected in breast cancer.,		

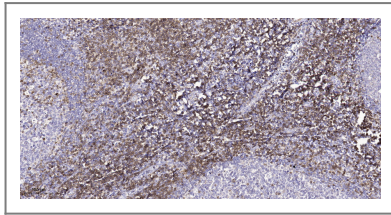
## Validation Data



Western Blot analysis of various cells using KEPI Polyclonal Antibody diluted at 1:1000



Western blot analysis of lysates from Jurkat and COLO205 cells, using PPP1R14C Antibody. The lane on the right is blocked with the synthesized peptide.



Immunohistochemical analysis of paraffin-embedded human tonsil. 1, Tris-EDTA, pH 9.0 was used for antigen retrieval. 2 Antibody was diluted at 1:200 (4° overnight). 3, Secondary antibody was diluted at 1:200 (room temperature, 45 min).

## Contact information

Orders: [order.cn@immunoway.com](mailto:order.cn@immunoway.com)  
 Support: [support.cn@immunoway.com](mailto:support.cn@immunoway.com)  
 Telephone: 400-8787-807 (China)  
 Website: <http://www.immunoway.com.cn>  
 Address: 2200 Ringwood Ave San Jose, CA 95131 USA



Please scan the QR code to access additional product information:  
**KEPI Rabbit pAb**

For Research Use Only. Not for Use in Diagnostic Procedures.

[Antibody](#) | [ELISA Kits](#) | [Protein](#) | [Reagents](#)