

## KCNG2 Rabbit pAb

CatalogNo: YT2454

### Key Features

**Host Species**

- Rabbit

**Reactivity**

- Human, Mouse, Rat

**Applications**

- WB, IHC

**MW**

- 51kD (Observed)

**Isotype**

- IgG

### Recommended Dilution Ratios

**WB 1:500-2000****IHC 1:50-300**

### Storage

**Storage\***

-15°C to -25°C/1 year (Do not lower than -25°C)

**Formulation**

Liquid in PBS containing 50% glycerol, 0.5% BSA and 0.02% sodium azide.

### Basic Information

**Clonality**

Polyclonal

### Immunogen Information

**Immunogen**

The antiserum was produced against synthesized peptide derived from human KCNG2. AA range: 321-370

**Specificity**

KCNG2 Polyclonal Antibody detects endogenous levels of KCNG2 protein.

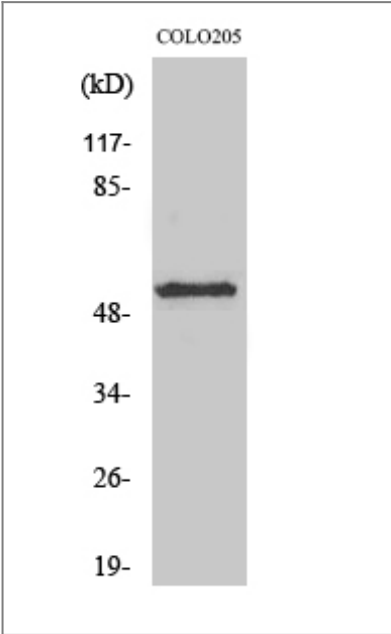
### Target Information

**Gene name**

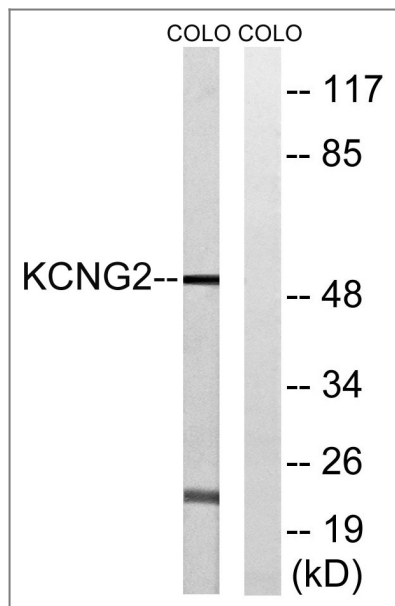
KCNG2

<b>Protein Name</b>	Potassium voltage-gated channel subfamily G member 2		
	<b>Organism</b>	<b>Gene ID</b>	<b>UniProt ID</b>
	Human	<a href="#">26251;</a>	<a href="#">Q9UJ96;</a>
	Rat	<a href="#">307234;</a>	<a href="#">Q9QYU3;</a>
<b>Cellular Localization</b>	Membrane; Multi-pass membrane protein.		
<b>Tissue specificity</b>	Highly expressed in heart, liver, skeletal muscle, kidney and pancreas. Detected at low levels in brain, lung and placenta.		
<b>Function</b>	Domain:The segment S4 is probably the voltage-sensor and is characterized by a series of positively charged amino acids at every third position.,Function:Potassium channel subunit. Modulates channel activity by shifting the threshold and the half-maximal activation to more negative values.,miscellaneous:Heterodimers with KCNB1 are highly sensitive to inhibition by tetraethylammonium (TEA) and propafenone.,similarity:Belongs to the potassium channel family. G subfamily.,subunit:Heterodimer with KCNB1. Does not form homomultimers.,tissue specificity:Highly expressed in heart, liver, skeletal muscle, kidney and pancreas. Detected at low levels in brain, lung and placenta.,		

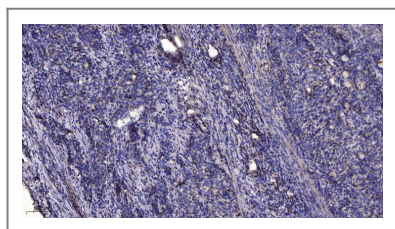
| Validation Data



Western Blot analysis of various cells using KCNG2 Polyclonal Antibody



Western blot analysis of lysates from COLO cells, using KCNG2 Antibody. The lane on the right is blocked with the synthesized peptide.



Immunohistochemical analysis of paraffin-embedded human Gastric adenocarcinoma. 1, Antibody was diluted at 1:200(4° overnight). 2, Tris-EDTA, pH 9.0 was used for antigen retrieval. 3, Secondary antibody was diluted at 1:200(room temperature, 45min).

## Contact information

Orders: [order.cn@immunoway.com](mailto:order.cn@immunoway.com)  
 Support: [support.cn@immunoway.com](mailto:support.cn@immunoway.com)  
 Telephone: 400-8787-807(China)  
 Website: <http://www.immunoway.com.cn>  
 Address: 2200 Ringwood Ave San Jose, CA 95131 USA



Please scan the QR code to access additional product information:  
**KCNG2 Rabbit pAb**

For Research Use Only. Not for Use in Diagnostic Procedures.

[Antibody](#) | [ELISA Kits](#) | [Protein](#) | [Reagents](#)