

## Kanadaptin Rabbit pAb

CatalogNo: YT2449

### Key Features

#### Host Species

- Rabbit

#### Reactivity

- Human, Mouse

#### Applications

- WB, IHC, IF, ELISA

#### MW

- 85kD (Observed)

#### Isotype

- IgG

### Recommended Dilution Ratios

**WB 1:500-1:2000**

**IHC 1:100-1:300**

**IF 1:200-1:1000**

**ELISA 1:10000**

**Not yet tested in other applications.**

### Storage

**Storage\*** -15°C to -25°C/1 year (Do not lower than -25°C)

**Formulation** Liquid in PBS containing 50% glycerol, 0.5% BSA and 0.02% sodium azide.

### Basic Information

**Clonality** Polyclonal

### Immunogen Information

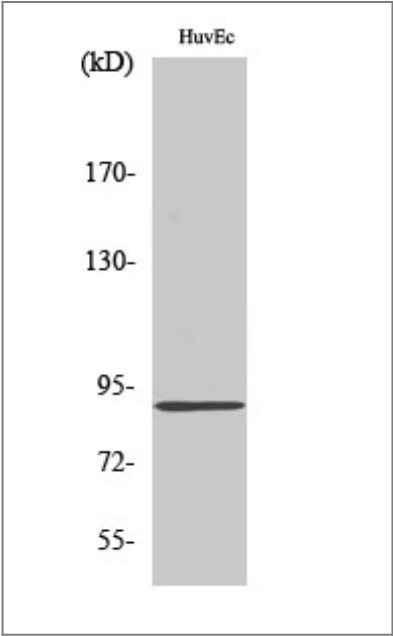
**Immunogen** The antiserum was produced against synthesized peptide derived from human NADAP. AA range: 421-470

**Specificity** Kanadaptin Polyclonal Antibody detects endogenous levels of Kanadaptin protein.

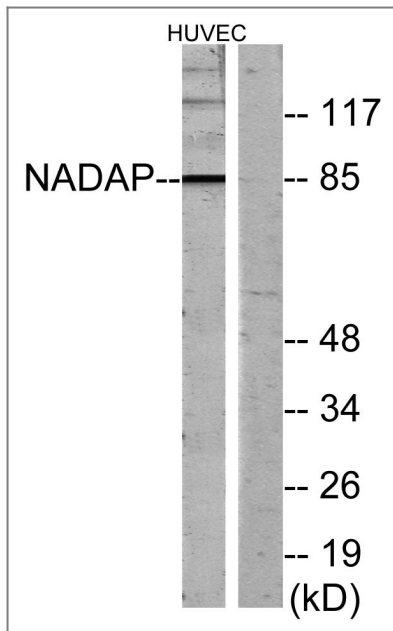
## Target Information

|                       |   |                         |                          |
|-----------------------|---|-------------------------|--------------------------|
| Gene name             | SLC4A1AP  |                         |                          |
| Protein Name          | Kanadaptin  |                         |                          |
|                       | Organism  | Gene ID                 | UniProt ID               |
|                       | Human   | <a href="#">22950</a> ; | <a href="#">Q9BWU0</a> ; |
| Cellular Localization | Nucleus . Cytoplasm . Mainly nuclear. Small amounts are found in the cytoplasm.   |                         |                          |
| Tissue specificity    | Ubiquitously expressed.   |                         |                          |
| Function              | Caution:PubMed:15764369 initially suggested a role in targeting SLC4A1 (kidney anion exchanger 1) to the plasma membrane; it does not seem to do so as it does not interact with SLC4A1 and has no effect on SLC4A1 trafficking.,online information:Band 3 entry,PTM:Phosphorylated upon DNA damage, probably by ATM or ATR.,similarity:Contains 1 FHA domain.,subcellular location:Mainly nuclear. Small amounts are found in the cytoplasm.,tissue specificity:Ubiquitously expressed., |                         |                          |

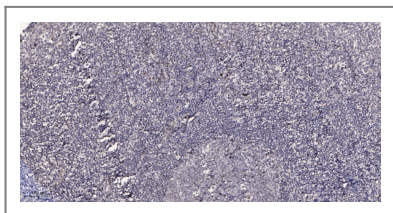
## Validation Data



Western Blot analysis of various cells using Kanadaptin Polyclonal Antibody diluted at 1:2000



Western blot analysis of lysates from HUVEC cells, using NADAP Antibody. The lane on the right is blocked with the synthesized peptide.



Immunohistochemical analysis of paraffin-embedded human tonsil. 1, Antibody was diluted at 1:200(4° overnight). 2, Tris-EDTA,pH9.0 was used for antigen retrieval. 3,Secondary antibody was diluted at 1:200(room temperature, 45min).

## | Contact information

Orders: order.cn@immunoway.com  
Support: support.cn@immunoway.com  
Telephone: 400-8787-807(China)  
Website: <http://www.immunoway.com.cn>  
Address: 2200 Ringwood Ave San Jose, CA 95131 USA



Please scan the QR code to access additional product information:  
**Kanadaptin Rabbit pAb**

For Research Use Only. Not for Use in Diagnostic Procedures.

[Antibody](#) | [ELISA Kits](#) | [Protein](#) | [Reagents](#)