

IPP-2 Rabbit pAb

CatalogNo: YT2386

Key Features

Host Species

- Rabbit

Reactivity

- Human, Mouse, Rat

Applications

- WB, IHC, IF, ELISA

MW

- 25kD (Observed)

Isotype

- IgG

Storage

Storage* -15°C to -25°C/1 year (Do not lower than -25°C)

Formulation Liquid in PBS containing 50% glycerol, 0.5% BSA and 0.02% sodium azide.

Recommended Dilution Ratios

WB 1:500-1:2000

IHC 1:100-1:300

ELISA 1:5000

IF 1:50-200

Basic Information

Clonality Polyclonal

Immunogen Information

Immunogen The antiserum was produced against synthesized peptide derived from human PPP1R2. AA range:86-135

Specificity IPP-2 Polyclonal Antibody detects endogenous levels of IPP-2 protein.

Target Information

Gene name PPP1R2

Protein Name Protein phosphatase inhibitor 2

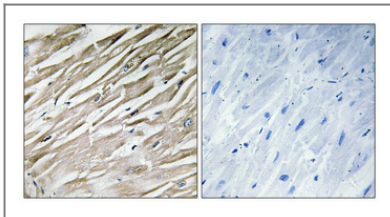
Organism	Gene ID	UniProt ID
Human	5504;	P41236;
Mouse	66849;	Q9DCL8;
Rat	192361;	P50411;

Cellular Localization protein phosphatase type 1 complex,

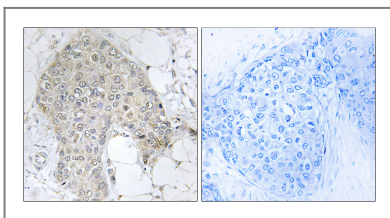
Tissue specificity Epithelium,Heart,Platelet,Skin,Testis,

Function Function:Inhibitor of protein-phosphatase 1.,PTM:Phosphorylation on Thr-73 by GSK3 activates PP1 by dissociating the PP1-PPP1R2 complex (By similarity). Phosphorylation on Ser-44 by ATM activates PP1 by dissociating the PP1-PPP1R2 complex.,similarity:Belongs to the protein phosphatase inhibitor 2 family.,subunit:Heterodimer with PP1.,

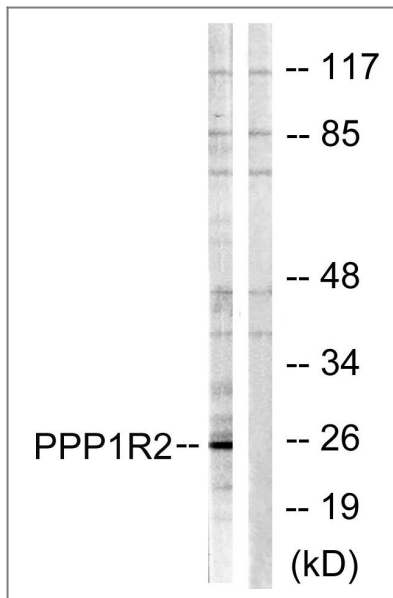
Validation Data



Immunohistochemical analysis of paraffin-embedded Human heart. Antibody was diluted at 1:100(4° overnight). High-pressure and temperature Tris-EDTA,pH8.0 was used for antigen retrieval. Negative control (right) obtained from antibody was pre-absorbed by immunogen peptide.



Immunohistochemistry analysis of paraffin-embedded human breast carcinoma tissue, using PPP1R2 Antibody. The picture on the right is blocked with the synthesized peptide.



Western blot analysis of lysates from Jurkat cells, using PPP1R2 Antibody. The lane on the right is blocked with the synthesized peptide.

Contact information

Orders: order.cn@immunoway.com
Support: support.cn@immunoway.com
Telephone: 400-8787-807(China)
Website: <http://www.immunoway.com.cn>
Address: 2200 Ringwood Ave San Jose, CA 95131 USA



Please scan the QR code to access additional product information:
IPP-2 Rabbit pAb

For Research Use Only. Not for Use in Diagnostic Procedures.

[Antibody](#) | [ELISA Kits](#) | [Protein](#) | [Reagents](#)