

## InsP5 2-kinase Rabbit pAb

CatalogNo: YT2355

### Key Features

#### Host Species

- Rabbit

#### Reactivity

- Human, Mouse, Rat

#### Applications

- WB, IHC, IF, ELISA

#### MW

- 56kD (Observed)

#### Isotype

- IgG

### Recommended Dilution Ratios

**WB 1:500-1:2000**

**IHC 1:100-1:300**

**IF 1:200-1:1000**

**ELISA 1:10000**

**Not yet tested in other applications.**

### Storage

**Storage\*** -15°C to -25°C/1 year (Do not lower than -25°C)

**Formulation** Liquid in PBS containing 50% glycerol, 0.5% BSA and 0.02% sodium azide.

### Basic Information

**Clonality** Polyclonal

### Immunogen Information

**Immunogen** The antiserum was produced against synthesized peptide derived from human IPPK. AA range:11-60

**Specificity** InsP5 2-kinase Polyclonal Antibody detects endogenous levels of InsP5 2-kinase protein.

## | Target Information

**Gene name** IPPK

**Protein Name** Inositol-pentakisphosphate 2-kinase

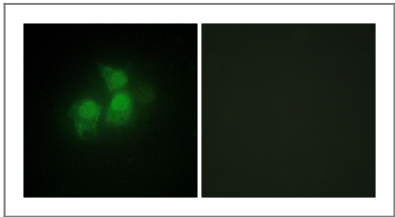
Organism	Gene ID	UniProt ID
Human	<a href="#">64768;</a>	<a href="#">Q9H8X2;</a>
Mouse	<a href="#">75678;</a>	<a href="#">Q6P1C1;</a>
Rat	<a href="#">306808;</a>	<a href="#">Q5PXE9;</a>

**Cellular Localization** Cytoplasm . Nucleus .

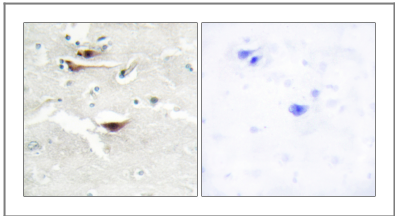
**Tissue specificity** Ubiquitously expressed, with high expression in heart, brain, testis and placenta.

**Function** Catalytic activity:ATP + 1D-myo-inositol 1,3,4,5,6-pentakisphosphate = ADP + 1D-myo-inositol hexakisphosphate.,Domain:The EXKPK motif is conserved in inositol-pentakisphosphate 2-kinases of both family 1 and 2.,Function:Phosphorylates Ins(1,3,4,5,6)P5 at position 2 to form Ins(1,2,3,4,5,6)P6 (InsP6 or phytate). InsP6 is involved in many processes such as mRNA export, non-homologous end-joining, endocytosis, ion channel regulation. It also protects cells from TNF-alpha-induced apoptosis.,similarity:Belongs to the IPK1 type 2 family.,tissue specificity:Ubiquitously expressed, with high expression in heart, brain, testis and placenta.,

## | Validation Data



Immunofluorescence analysis of HepG2 cells, using IPPK Antibody. The picture on the right is blocked with the synthesized peptide.



Immunohistochemistry analysis of paraffin-embedded human brain tissue, using IPPK Antibody. The picture on the right is blocked with the synthesized peptide.

## | Contact information

Orders: order.cn@immunoway.com  
Support: support.cn@immunoway.com  
Telephone: 400-8787-807(China)  
Website: <http://www.immunoway.com.cn>  
Address: 2200 Ringwood Ave San Jose, CA 95131 USA



Please scan the QR code  
to access additional  
product information:  
**InsP5 2-kinase**  
**Rabbit pAb**

---

For Research Use Only. Not for Use in Diagnostic Procedures.

[Antibody](#) | [ELISA Kits](#) | [Protein](#) | [Reagents](#)