

INPP5J Rabbit pAb

CatalogNo: YT2351

Key Features

Host Species

- Rabbit

Reactivity

- Human,Rat

Applications

- IHC,IF,ELISA

MW

- 107kD (Calculated)

Isotype

- IgG

Recommended Dilution Ratios

IHC 1:100-1:300

ELISA 1:40000

IF 1:50-200

Storage

Storage*

-15°C to -25°C/1 year(Do not lower than -25°C)

Formulation

Liquid in PBS containing 50% glycerol, 0.5% BSA and 0.02% sodium azide.

Basic Information

Clonality

Polyclonal

Immunogen Information

Immunogen

Synthesized peptide derived from INPP5J . at AA range: 850-930

Specificity

INPP5J Polyclonal Antibody detects endogenous levels of INPP5J protein.

Target Information

Gene name

INPP5J

Protein Name Phosphatidylinositol 4,5-bisphosphate 5-phosphatase A

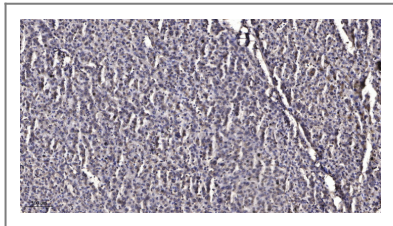
Organism	Gene ID	UniProt ID
Human	27124;	Q15735;
Mouse		P59644;
Rat	171088;	Q9JMC1;

Cellular Localization Cytoplasm . Predominantly localized to membrane ruffles. .

Tissue specificity Brain,Cerebellum,Heart,

Function Catalytic activity:1D-myo-inositol 1,3,4,5-tetrakisphosphate + H(2)O = 1D-myo-inositol 1,3,4-trisphosphate + phosphate.,Catalytic activity:D-myo-inositol 1,4,5-trisphosphate + H(2)O = myo-inositol 1,4-bisphosphate + phosphate.,Domain:The 5 Arg-Ser-Xaa-Ser-Xaa-Xaa (RSXSXX) motifs may constitute binding sites for the 14-3-3 protein.,Function:Inositol 5-phosphatase, which converts inositol 1,4,5-trisphosphate to inositol 1,4-bisphosphate. Also converts phosphatidylinositol 4,5-bisphosphate to phosphatidylinositol 4-phosphate and inositol 1,3,4,5-tetrakisphosphate to inositol 1,3,4-trisphosphate in vitro. May be involved in modulation of the function of inositol and phosphatidylinositol polyphosphate-binding proteins that are present at membranes ruffles.,PTM:Phosphorylated at Ser/Thr residues.,similarity:Belongs to the inositol-1,4,5-trisphosphate 5-phosphatase type II family.,subcellular location:Predominantly localized to membrane ruffles.,

Validation Data



Immunohistochemical analysis of paraffin-embedded human liver cancer. 1, Antibody was diluted at 1:200(4° overnight). 2, Tris-EDTA,pH9.0 was used for antigen retrieval. 3,Secondary antibody was diluted at 1:200(room temperature, 45min).

Contact information

Orders: order.cn@immunoway.com
Support: support.cn@immunoway.com
Telephone: 400-8787-807(China)
Website: <http://www.immunoway.com.cn>
Address: 2200 Ringwood Ave San Jose, CA 95131 USA



Please scan the QR code to access additional product information:
INPP5J Rabbit pAb