

ILT-3 Rabbit pAb

CatalogNo: YT2348

Key Features

Host Species

- Rabbit

Reactivity

- Human

Applications

- IF,ELISA

MW

- 49kD (Calculated)

Isotype

- IgG

Recommended Dilution Ratios

IF 1:200-1:1000

ELISA 1:20000

Not yet tested in other applications

Storage

Storage* -15°C to -25°C/1 year(Do not lower than -25°C)

Formulation Liquid in PBS containing 50% glycerol, 0.5% BSA and 0.02% sodium azide.

Basic Information

Clonality Polyclonal

Immunogen Information

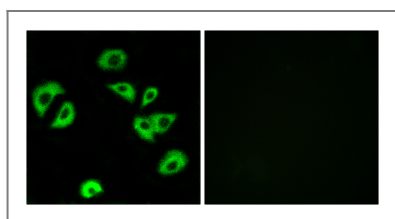
Immunogen The antiserum was produced against synthesized peptide derived from human LILRB4. AA range:201-250

Specificity ILT-3 Polyclonal Antibody detects endogenous levels of ILT-3 protein.

Target Information

Gene name	LILRB4		
Protein Name	Leukocyte immunoglobulin-like receptor subfamily B member 4		
	Organism	Gene ID	UniProt ID
	Human	11006;	Q8NHJ6;
	Mouse		Q64281;
Cellular Localization	Cell membrane ; Single-pass type I membrane protein . Ligand binding leads to internalization and translocation to an antigen-processing compartment. .		
Tissue specificity	Detected on monocytes, macrophages, dendritic cells, natural killer cells and B-cells (at protein level). Expressed in the lung.		
Function	<p>Domain:Contains 3 copies of a cytoplasmic motif that is referred to as the immunoreceptor tyrosine-based inhibitor motif (ITIM). This motif is involved in modulation of cellular responses. The phosphorylated ITIM motif can bind the SH2 domain of several SH2-containing phosphatases.,Function:Receptor for class I MHC antigens. Recognizes a broad spectrum of HLA-A, HLA-B, HLA-C and HLA-G alleles. Involved in the down-regulation of the immune response and the development of tolerance, e.g. towards transplants. Interferes with TNFRSF5-signaling and NF-kappa-B up-regulation. Inhibits receptor-mediated phosphorylation of cellular proteins and mobilization of intracellular calcium ions.,induction:Upon contact with CD8(+)CD28(-) alloantigen-specific T suppressor (Ts) cells.,PTM:Phosphorylated.,similarity:Contains 2 Ig-like C2-type (immunoglobulin-like) domains.,subcellular location:Ligand binding leads to internalization and translocation to an antigen-processing compartment.,subunit:Binds PTPN6 when phosphorylated.,tissue specificity:Detected in monocytes, macrophages, dendritic cells, lung, natural killer cells and B-cells.,</p>		

Validation Data



Immunofluorescence analysis of A549 cells, using LILRB4 Antibody. The picture on the right is blocked with the synthesized peptide.

Contact information

Orders: order.cn@immunoway.com
 Support: support.cn@immunoway.com
 Telephone: 400-8787-807(China)
 Website: <http://www.immunoway.com.cn>
 Address: 2200 Ringwood Ave San Jose, CA 95131 USA



Please scan the QR code to access additional product information:

ILT-3 Rabbit pAb

