

IL-10R α Rabbit pAb

CatalogNo: YT2308 **Orthogonal Validated** 

Key Features

Host Species

- Rabbit

Reactivity

- Human, Mouse

Applications

- WB, IF, ELISA

MW

- 63kD (Observed)

Isotype

- IgG

Storage

Storage* -15°C to -25°C/1 year (Do not lower than -25°C)**Formulation** Liquid in PBS containing 50% glycerol, 0.5% BSA and 0.02% sodium azide.

Recommended Dilution Ratios

WB 1:500-1:2000**IF 1:200-1:1000****ELISA 1:10000****Not yet tested in other applications.**

Basic Information

Clonality Polyclonal

Immunogen Information

Immunogen The antiserum was produced against synthesized peptide derived from human IL-10R alpha. AA range:462-511**Specificity** IL-10R α Polyclonal Antibody detects endogenous levels of IL-10R α protein.

Target Information

Gene name IL10RA

Protein Name Interleukin-10 receptor subunit alpha

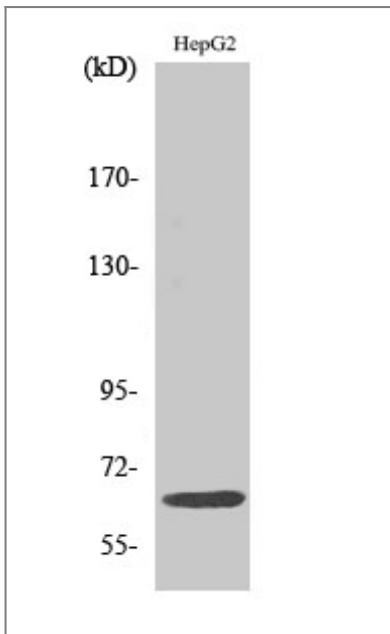
Organism	Gene ID	UniProt ID
Human	3587 ;	Q13651 ;
Mouse		Q61727 ;

Cellular Localization Cell membrane ; Single-pass type I membrane protein. Cytoplasm .

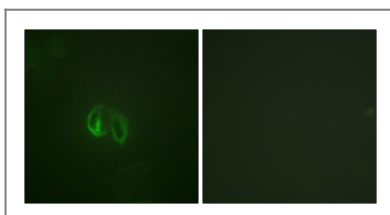
Tissue specificity Primarily expressed in hematopoietic cells including B-cells, T-cells, NK cells, monocytes and macrophages. Not expressed in non-hematopoietic cells such as fibroblasts or endothelial cells.

Function Function:Receptor for IL10; binds IL10 with a high affinity.,similarity:Belongs to the type II cytokine receptor family.,tissue specificity:Spleen, thymus, and PBMC. Weak expression in pancreas, skeletal muscle, brain, heart, and kidney. Placenta, lung, and liver showed intermediate levels. Monocytes, B-cells, large granular lymphocytes, and T-cells express high levels.,

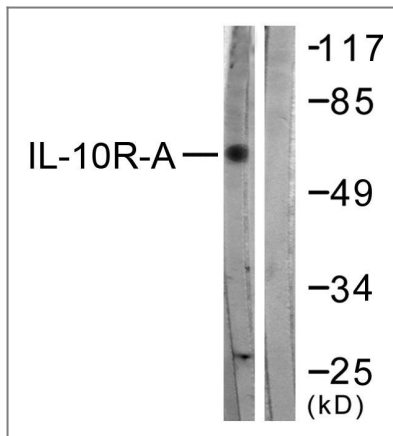
Validation Data



Western Blot analysis of various cells using IL-10R α Polyclonal Antibody



Immunofluorescence analysis of HepG2 cells, using IL-10R alpha Antibody. The picture on the right is blocked with the synthesized peptide.



Western blot analysis of lysates from HepG2 cells, treated with Na₂VO₃ 0.3nM 40', using IL-10R alpha Antibody. The lane on the right is blocked with the synthesized peptide.

Contact information

Orders: order.cn@immunoway.com
Support: support.cn@immunoway.com
Telephone: 400-8787-807(China)
Website: <http://www.immunoway.com.cn>
Address: 2200 Ringwood Ave San Jose, CA 95131 USA



Please scan the QR code to access additional product information:
IL-10R α Rabbit pAb

For Research Use Only. Not for Use in Diagnostic Procedures.

[Antibody](#) | [ELISA Kits](#) | [Protein](#) | [Reagents](#)