

## IFIT-5 Rabbit pAb

CatalogNo: YT2276

### | Key Features

#### Host Species

- Rabbit

#### Reactivity

- Human

#### Applications

- WB,ELISA

#### MW

- 50kD (Observed)

#### Isotype

- IgG

### | Recommended Dilution Ratios

**WB 1:500-1:2000**

**ELISA 1:40000**

**Not yet tested in other applications.**

### | Storage

#### Storage\*

-15°C to -25°C/1 year(Do not lower than -25°C)

#### Formulation

Liquid in PBS containing 50% glycerol, 0.5% BSA and 0.02% sodium azide.

### | Basic Information

#### Clonality

Polyclonal

### | Immunogen Information

#### Immunogen

The antiserum was produced against synthesized peptide derived from human IFIT5. AA range:281-330

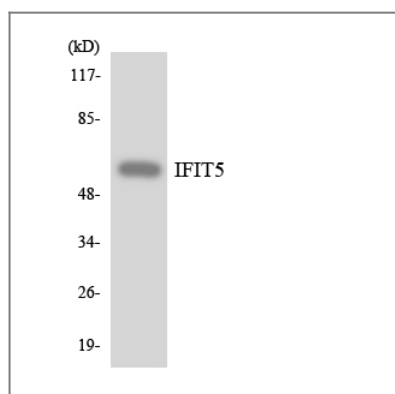
#### Specificity

IFIT-5 Polyclonal Antibody detects endogenous levels of IFIT-5 protein.

### | Target Information

<b>Gene name</b>	IFIT5		
<b>Protein Name</b>	Interferon-induced protein with tetratricopeptide repeats 5		
	<b>Organism</b>	<b>Gene ID</b>	<b>UniProt ID</b>
	Human	<a href="#">24138</a> ;	<a href="#">Q13325</a> ;
<b>Cellular Localization</b>	Cell projection, ruffle membrane . Colocalized with DDX58/RIG-I at cell surface ruffles. Localizes to actin-rich protrusions from the apical cell surface.		
<b>Tissue specificity</b>	Pancreas,Spleen,		
<b>Function</b>	induction:By interferons.,similarity:Belongs to the IFIT family.,similarity:Contains 8 TPR repeats.,		

## Validation Data



Western blot analysis of the lysates from HepG2 cells using IFIT5 antibody.

## Contact information

Orders: [order.cn@immunoway.com](mailto:order.cn@immunoway.com)  
 Support: [support.cn@immunoway.com](mailto:support.cn@immunoway.com)  
 Telephone: 400-8787-807(China)  
 Website: <http://www.immunoway.com.cn>  
 Address: 2200 Ringwood Ave San Jose, CA 95131 USA



Please scan the QR code to access additional product information:  
**IFIT-5 Rabbit pAb**

For Research Use Only. Not for Use in Diagnostic Procedures.

[Antibody](#) | [ELISA Kits](#) | [Protein](#) | [Reagents](#)