

## HUNK Rabbit pAb

CatalogNo: YT2262

### | Key Features

#### Host Species

- Rabbit

#### Reactivity

- Human, Mouse, Rat

#### Applications

- WB, ELISA

#### MW

- 75kD (Observed)

#### Isotype

- IgG

### | Recommended Dilution Ratios

**WB 1:500-1:2000**

**ELISA 1:40000**

**Not yet tested in other applications.**

### | Storage

#### Storage\*

-15°C to -25°C/1 year (Do not lower than -25°C)

#### Formulation

Liquid in PBS containing 50% glycerol, 0.5% BSA and 0.02% sodium azide.

### | Basic Information

#### Clonality

Polyclonal

### | Immunogen Information

#### Immunogen

The antiserum was produced against synthesized peptide derived from human HUNK. AA range: 251-300

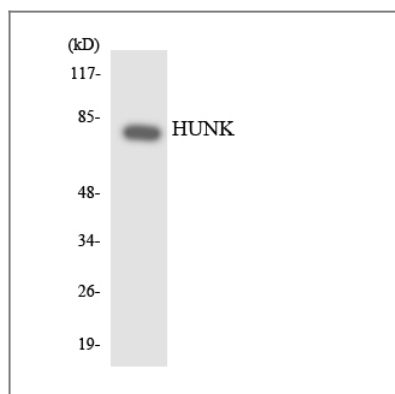
#### Specificity

HUNK Polyclonal Antibody detects endogenous levels of HUNK protein.

### | Target Information

<b>Gene name</b>	HUNK		
<b>Protein Name</b>	Hormonally up-regulated neu tumor-associated kinase		
	<b>Organism</b>	<b>Gene ID</b>	<b>UniProt ID</b>
	Human	<a href="#">30811</a> ;	<a href="#">P57058</a> ;
	Mouse	<a href="#">26559</a> ;	<a href="#">O88866</a> ;
<b>Cellular Localization</b>	nucleus,cytoplasm,		
<b>Tissue specificity</b>	Lung adenocarcinoma,		
<b>Function</b>	Catalytic activity:ATP + a protein = ADP + a phosphoprotein.,similarity:Belongs to the protein kinase superfamily. CAMK Ser/Thr protein kinase family. SNF1 subfamily.,similarity:Contains 1 protein kinase domain.,		

## Validation Data



Western blot analysis of the lysates from 293 cells using HUNK antibody.

## Contact information

Orders: [order.cn@immunoway.com](mailto:order.cn@immunoway.com)  
 Support: [support.cn@immunoway.com](mailto:support.cn@immunoway.com)  
 Telephone: 400-8787-807(China)  
 Website: <http://www.immunoway.com.cn>  
 Address: 2200 Ringwood Ave San Jose, CA 95131 USA



Please scan the QR code to access additional product information:

**HUNK Rabbit pAb**