

## hnRNP CL1 Rabbit pAb

CatalogNo: YT2196

### Key Features

#### Host Species

- Rabbit

#### Reactivity

- Human

#### Applications

- WB,ELISA

#### MW

- 32kD (Observed)

#### Isotype

- IgG

### Recommended Dilution Ratios

**WB 1:500-1:2000**

**ELISA 1:20000**

**Not yet tested in other applications.**

### Storage

#### Storage\*

-15°C to -25°C/1 year(Do not lower than -25°C)

#### Formulation

Liquid in PBS containing 50% glycerol, 0.5% BSA and 0.02% sodium azide.

### Basic Information

#### Clonality

Polyclonal

### Immunogen Information

#### Immunogen

The antiserum was produced against synthesized peptide derived from human HNRCL. AA range:31-80

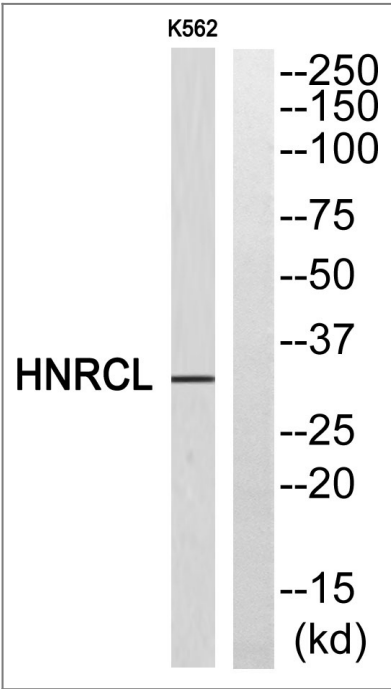
#### Specificity

hnRNP CL1 Polyclonal Antibody detects endogenous levels of hnRNP CL1 protein.

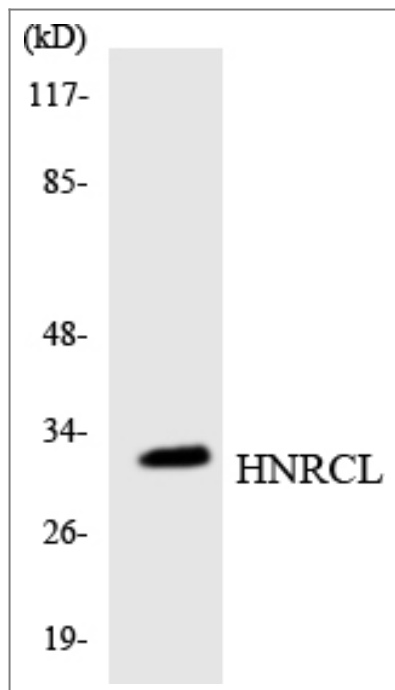
### Target Information

Gene name	HNRNPCL1		
Protein Name	Heterogeneous nuclear ribonucleoprotein C-like 1		
	Organism	Gene ID	UniProt ID
	Human	<a href="#">343069</a> ;	<a href="#">O60812</a> ;
Cellular Localization	Nucleus . Component of ribonucleosomes. .		
Tissue specificity	Pooled,Uterus,		
Function	Function:May play a role in nucleosome assembly by neutralizing basic proteins such as A and B core hnRNPs.,similarity:Belongs to the RRM HNRPC family. RALY subfamily.,similarity:Contains 1 RRM (RNA recognition motif) domain.,subcellular location:Component of ribonucleosomes.,		

Validation Data



Western blot analysis of HNRCL Antibody. The lane on the right is blocked with the HNRCL peptide.



Western blot analysis of the lysates from RAW264.7 cells using HNRCL antibody.

## Contact information

Orders: order.cn@immunoway.com  
Support: support.cn@immunoway.com  
Telephone: 400-8787-807(China)  
Website: <http://www.immunoway.com.cn>  
Address: 2200 Ringwood Ave San Jose, CA 95131 USA



Please scan the QR code to access additional product information:  
**hnRNP CL1 Rabbit pAb**

For Research Use Only. Not for Use in Diagnostic Procedures.

[Antibody](#) | [ELISA Kits](#) | [Protein](#) | [Reagents](#)