

## HMG-17 Rabbit pAb

CatalogNo: YT2185

### Key Features

#### Host Species

- Rabbit

#### Reactivity

- Human, Mouse, Rat

#### Applications

- IHC, IF, ELISA

#### MW

- 10kD (Calculated)
- 15-17kD (Observed)

#### Isotype

- IgG

### Storage

**Storage\*** -15°C to -25°C/1 year (Do not lower than -25°C)

**Formulation** Liquid in PBS containing 50% glycerol, 0.5% BSA and 0.02% sodium azide.

### Recommended Dilution Ratios

**IHC 1:100-1:300**

**IF 1:200-1:1000**

**ELISA 1:40000**

**Not yet tested in other applications.**

### Basic Information

**Clonality** Polyclonal

### Immunogen Information

**Immunogen** The antiserum was produced against synthesized peptide derived from human HMG17. AA range:1-50

**Specificity** HMG-17 Polyclonal Antibody detects endogenous levels of HMG-17 protein.

---

## | Target Information

**Gene name** HMGN2

**Protein Name** Non-histone chromosomal protein HMG-17

Organism	Gene ID	UniProt ID
Human	<a href="#">3151</a> ;	<a href="#">P05204</a> ;
Mouse	<a href="#">15331</a> ;	<a href="#">P09602</a> ;
Rat		<a href="#">P18437</a> ;

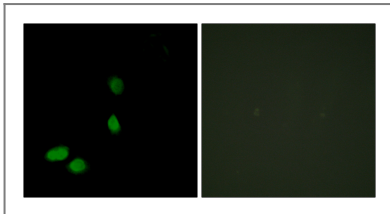
**Cellular Localization** Nucleus . Cytoplasm . Cytoplasmic enrichment upon phosphorylation.

**Tissue specificity** Brain,Colon,Eye,Lung,Lymph,Mammary gland,Muscle,Peripheral

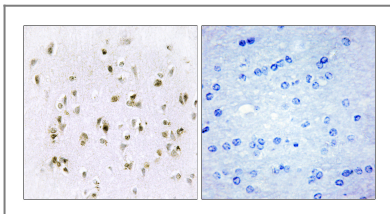
**Function** Function: Binds to the inner side of the nucleosomal DNA thus altering the interaction between the DNA and the histone octamer. May be involved in the process which maintains transcribable genes in a unique chromatin conformation.,mass spectrometry: PubMed:10739259,PTM: Phosphorylation favors cytoplasmic localization.,similarity: Belongs to the HMGN family.,subcellular location: Cytoplasmic enrichment upon phosphorylation.,

---

## | Validation Data



Immunofluorescence analysis of HeLa cells, using HMG17 Antibody. The picture on the right is blocked with the synthesized peptide.



Immunohistochemistry analysis of paraffin-embedded human brain tissue, using HMG17 Antibody. The picture on the right is blocked with the synthesized peptide.

## | Contact information

Orders: order.cn@immunoway.com  
Support: support.cn@immunoway.com  
Telephone: 400-8787-807(China)  
Website: <http://www.immunoway.com.cn>  
Address: 2200 Ringwood Ave San Jose, CA 95131 USA



Please scan the QR code  
to access additional  
product information:  
**HMG-17 Rabbit pAb**

---

For Research Use Only. Not for Use in Diagnostic Procedures.

[Antibody](#) | [ELISA Kits](#) | [Protein](#) | [Reagents](#)