

## HKR1 Rabbit pAb

CatalogNo: YT2176

### | Key Features

#### Host Species

- Rabbit

#### Reactivity

- Human

#### Applications

- WB,IHC,IF,ELISA

#### MW

- 73kD (Observed)

#### Isotype

- IgG

### | Recommended Dilution Ratios

**WB 1:500-1:2000**

**IHC 1:100-1:300**

**IF 1:200-1:1000**

**ELISA 1:5000**

**Not yet tested in other applications.**

### | Storage

**Storage\*** -15°C to -25°C/1 year(Do not lower than -25°C)

**Formulation** Liquid in PBS containing 50% glycerol, 0.5% BSA and 0.02% sodium azide.

### | Basic Information

**Clonality** Polyclonal

### | Immunogen Information

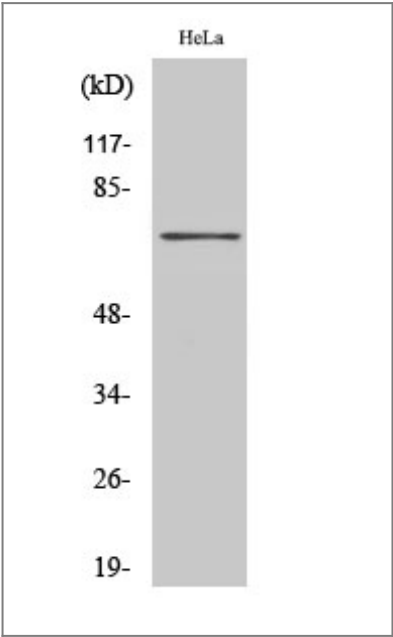
**Immunogen** The antiserum was produced against synthesized peptide derived from human HKR1. AA range:141-190

**Specificity** HKR1 Polyclonal Antibody detects endogenous levels of HKR1 protein.

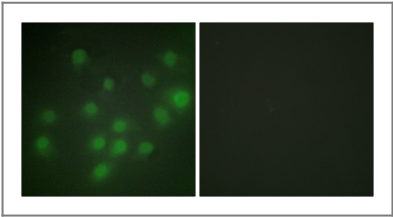
## | Target Information

Gene name	HKR1		
Protein Name	Krueppel-related zinc finger protein 1		
	Organism	Gene ID	UniProt ID
	Human	<a href="#">284459</a> ;	<a href="#">P10072</a> ;
Cellular Localization	Nucleus .		
Tissue specificity	Brain, Eye, Ovary,		
Function	Function: May be involved in transcriptional regulation., similarity: Belongs to the krueppel C2H2-type zinc-finger protein family., similarity: Contains 1 KRAB domain., similarity: Contains 13 C2H2-type zinc fingers.,		

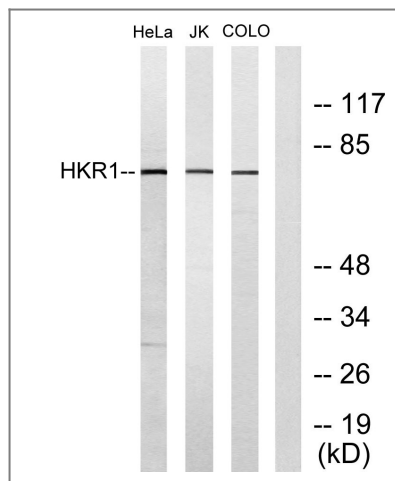
## | Validation Data



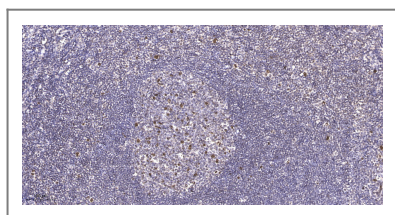
Western Blot analysis of various cells using HKR1 Polyclonal Antibody cells nucleus extracted by Minute TM Cytoplasmic and Nuclear Fractionation kit (SC-003, Invent biotech, MN, USA).



Immunofluorescence analysis of HUVEC cells, using HKR1 Antibody. The picture on the right is blocked with the synthesized peptide.



Western blot analysis of lysates from HeLa, Jurkat, and COLO205 cells, using HKR1 Antibody. The lane on the right is blocked with the synthesized peptide.



Immunohistochemical analysis of paraffin-embedded human tonsil. 1, Antibody was diluted at 1:200(4° overnight). 2, Tris-EDTA,pH9.0 was used for antigen retrieval. 3,Secondary antibody was diluted at 1:200(room temperature, 45min).

## Contact information

Orders: order.cn@immunoway.com  
 Support: support.cn@immunoway.com  
 Telephone: 400-8787-807(China)  
 Website: <http://www.immunoway.com.cn>  
 Address: 2200 Ringwood Ave San Jose, CA 95131 USA



Please scan the QR code to access additional product information:  
**HKR1 Rabbit pAb**

For Research Use Only. Not for Use in Diagnostic Procedures.

[Antibody](#) | [ELISA Kits](#) | [Protein](#) | [Reagents](#)