

Histamine H1 Receptor Rabbit pAb

CatalogNo: YT2140

Key Features

Host Species

- Rabbit

Reactivity

- Human,Rat,Mouse,

Applications

- WB,IF,ELISA

MW

- 60kD (Observed)

Isotype

- IgG

Recommended Dilution Ratios

WB 1:500-1:2000

IF 1:200-1:1000

ELISA 1:10000

Not yet tested in other applications.

Storage

Storage*

-15°C to -25°C/1 year(Do not lower than -25°C)

Formulation

Liquid in PBS containing 50% glycerol, 0.5% BSA and 0.02% sodium azide.

Basic Information

Clonality

Polyclonal

Immunogen Information

Immunogen

The antiserum was produced against synthesized peptide derived from human HRH1. AA range:141-190

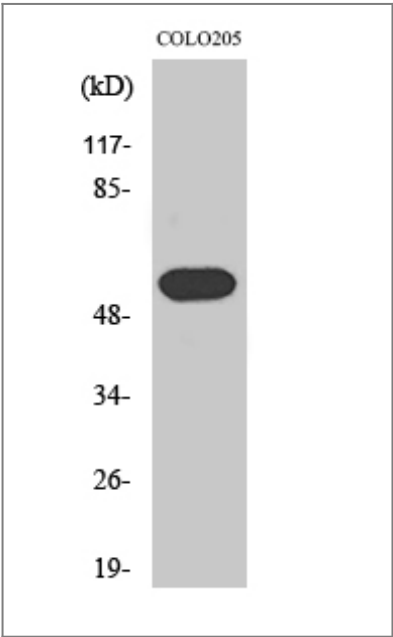
Specificity

Histamine H1 Receptor Polyclonal Antibody detects endogenous levels of Histamine H1 Receptor protein.

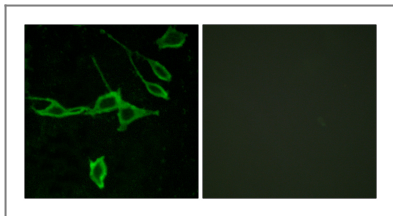
| Target Information

| | | | |
|-----------------------|--|------------------------|--------------------------|
| Gene name | HRH1 | | |
| Protein Name | Histamine H1 receptor | | |
| | Organism | Gene ID | UniProt ID |
| | Human | 3269 ; | P35367 ; |
| | Mouse | | P70174 ; |
| Cellular Localization | Cell membrane ; Multi-pass membrane protein . | | |
| Tissue specificity | Lens epithelium,Lung, | | |
| Function | Function:In peripheral tissues, the H1 subclass of histamine receptors mediates the contraction of smooth muscles, increase in capillary permeability due to contraction of terminal venules, and catecholamine release from adrenal medulla, as well as mediating neurotransmission in the central nervous system.,PTM:Potential sites of phosphorylation in the third cytoplasmic loop may play an important role in regulating signal transduction through the receptor molecule.,similarity:Belongs to the G-protein coupled receptor 1 family., | | |

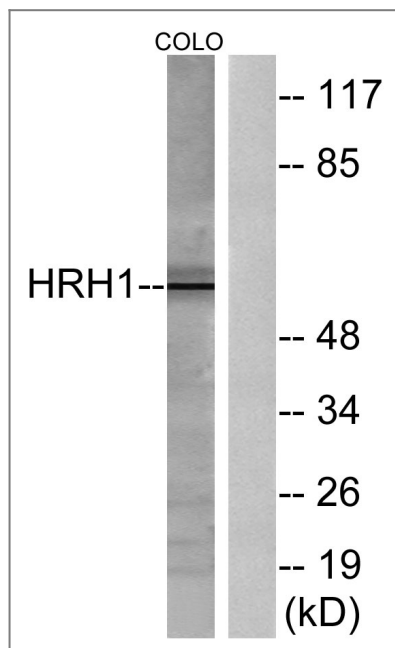
| Validation Data



Western Blot analysis of various cells using Histamine H1 Receptor Polyclonal Antibody diluted at 1:2000



Immunofluorescence analysis of LOVO cells, using HRH1 Antibody. The picture on the right is blocked with the synthesized peptide.



Western blot analysis of lysates from COLO205 cells, using HRH1 Antibody. The lane on the right is blocked with the synthesized peptide.

Contact information

Orders: order.cn@immunoway.com
 Support: support.cn@immunoway.com
 Telephone: 400-8787-807(China)
 Website: <http://www.immunoway.com.cn>
 Address: 2200 Ringwood Ave San Jose, CA 95131 USA



Please scan the QR code to access additional product information:
Histamine H1 Receptor Rabbit pAb

For Research Use Only. Not for Use in Diagnostic Procedures.

[Antibody](#) | [ELISA Kits](#) | [Protein](#) | [Reagents](#)