

## HEN1/2 Rabbit pAb

CatalogNo: YT2125

### Key Features

#### Host Species

- Rabbit

#### Reactivity

- Human, Mouse

#### Applications

- WB, IHC, IF, ELISA

#### MW

- 19kD (Observed)

#### Isotype

- IgG

### Recommended Dilution Ratios

**WB 1:500-1:2000**

**IHC 1:100-1:300**

**ELISA 1:10000**

**IF 1:50-200**

### Storage

#### Storage\*

-15°C to -25°C/1 year (Do not lower than -25°C)

#### Formulation

Liquid in PBS containing 50% glycerol, 0.5% BSA and 0.02% sodium azide.

### Basic Information

#### Clonality

Polyclonal

### Immunogen Information

#### Immunogen

The antiserum was produced against synthesized peptide derived from human HEN1/2. AA range: 41-90

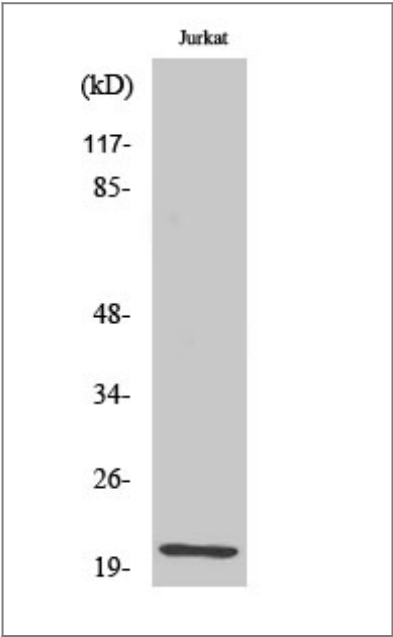
#### Specificity

HEN1/2 Polyclonal Antibody detects endogenous levels of HEN1/2 protein.

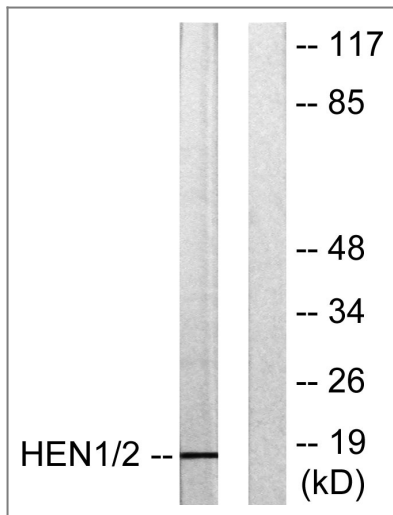
### Target Information

Gene name	HEN1/HEN2		
Protein Name	Helix-loop-helix protein 1		
	Organism	Gene ID	UniProt ID
	Human	<a href="#">4807</a> ; <a href="#">4808</a> ;	<a href="#">Q02575</a> ; <a href="#">Q02577</a> ;
	Mouse	<a href="#">18071</a> ; <a href="#">18072</a> ;	
Cellular Localization	Nucleus .		
Tissue specificity	Brain, Eye,		
Function	Function: May serve as DNA-binding protein and may be involved in the control of cell-type determination, possibly within the developing nervous system., similarity: Contains 1 basic helix-loop-helix (bHLH) domain., subunit: Efficient DNA binding requires dimerization with another bHLH protein.,		

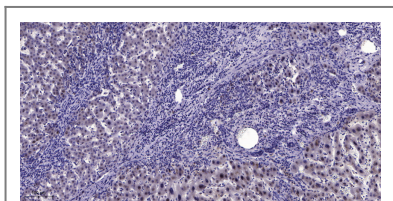
## | Validation Data



Western Blot analysis of various cells using HEN1/2 Polyclonal Antibody diluted at 1:1000 cells nucleus extracted by Minute TM Cytoplasmic and Nuclear Fractionation kit (SC-003, Invent biotech, MN, USA).



Western blot analysis of lysates from Jurkat cells, using HEN1/2 Antibody. The lane on the right is blocked with the synthesized peptide.



Immunohistochemical analysis of paraffin-embedded human liver cancer. 1, Antibody was diluted at 1:200(4° overnight). 2, Tris-EDTA,pH9.0 was used for antigen retrieval. 3,Secondary antibody was diluted at 1:200(room temperature, 45min).

## Contact information

Orders: order.cn@immunoway.com  
 Support: support.cn@immunoway.com  
 Telephone: 400-8787-807(China)  
 Website: <http://www.immunoway.com.cn>  
 Address: 2200 Ringwood Ave San Jose, CA 95131 USA



Please scan the QR code to access additional product information:  
**HEN1/2 Rabbit pAb**

For Research Use Only. Not for Use in Diagnostic Procedures.

[Antibody](#) | [ELISA Kits](#) | [Protein](#) | [Reagents](#)