

HDAC7 Rabbit pAb

CatalogNo: YT2119

| Key Features

Host Species

- Rabbit

Reactivity

- Human, Mouse, Rat

Applications

- WB, ELISA

MW

- 103kD (Observed)

Isotype

- IgG

| Recommended Dilution Ratios

WB 1:500-1:2000

ELISA 1:10000

Not yet tested in other applications.

| Storage

Storage*

-15°C to -25°C/1 year (Do not lower than -25°C)

Formulation

Liquid in PBS containing 50% glycerol, 0.5% BSA and 0.02% sodium azide.

| Basic Information

Clonality

Polyclonal

| Immunogen Information

Immunogen

The antiserum was produced against synthesized peptide derived from human HDAC7A. AA range: 121-170

Specificity

HDAC7 Polyclonal Antibody detects endogenous levels of HDAC7 protein.

| Target Information

Gene name HDAC7 HDAC7A

Protein Name Histone deacetylase 7

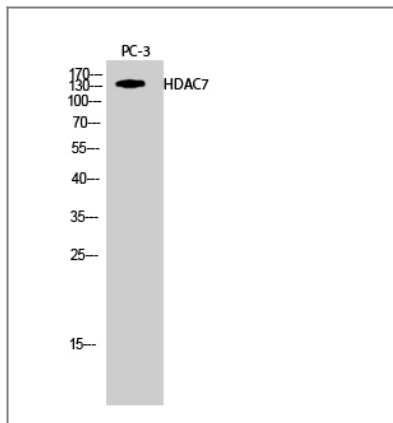
Organism	Gene ID	UniProt ID
Human	51564 ;	Q8WUI4 ;
Mouse	56233 ;	Q8C2B3 ;
Rat		Q99P96 ;

Cellular Localization Nucleus. Cytoplasm. In the nucleus, it associates with distinct subnuclear dot-like structures. Shuttles between the nucleus and the cytoplasm. Treatment with EDN1 results in shuttling from the nucleus to the perinuclear region. The export to cytoplasm depends on the interaction with the 14-3-3 protein YWHAE and is due to its phosphorylation.

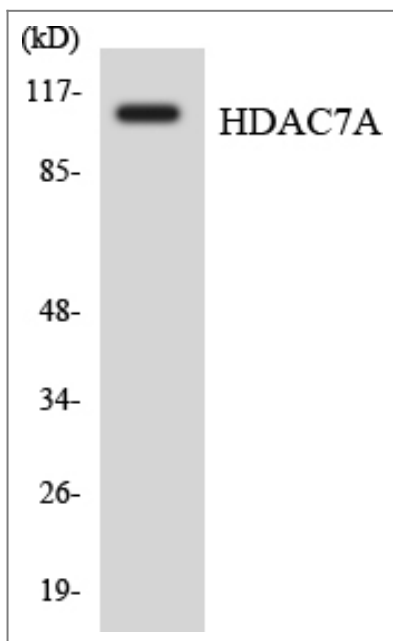
Tissue specificity B-cell,Cervix carcinoma,Colon,Embryo,Epithelium,Human lung,Placenta,Spleen,Teratoca

Function Catalytic activity:Hydrolysis of an N(6)-acetyl-lysine residue of a histone to yield a deacetylated histone.,Domain:The nuclear export sequence mediates the shuttling between the nucleus and the cytoplasm.,Function:Responsible for the deacetylation of lysine residues on the N-terminal part of the core histones (H2A, H2B, H3 and H4). Histone deacetylation gives a tag for epigenetic repression and plays an important role in transcriptional regulation, cell cycle progression and developmental events. Histone deacetylases act via the formation of large multiprotein complexes. Involved in muscle maturation by repressing transcription of myocyte enhancer factors such as MEF2A, MEF2B and MEF2C. During muscle differentiation, it shuttles into the cytoplasm, allowing the expression of myocyte enhancer factors (By similarity). May be involved in Epstein-Barr virus (EBV) latency, possibly by repressing the viral BZLF1 gene.,miscellaneous:Its activity is inhibited by Trichostatin A (TSA), a known histone deacetylase inhibitor.,PTM:May be phosphorylated by CaMK1.,sequence Caution:Intron retention.,similarity:Belongs to the histone deacetylase family. Type 2 subfamily.,subcellular location:In the nucleus, it associates with distinct subnuclear dot-like structures. Shuttles between the nucleus and the cytoplasm. Treatment with EDN1 results in shuttling from the nucleus to the perinuclear region. The export to cytoplasm depends on the interaction with the 14-3-3 protein YWHAE and may be due to its phosphorylation.,subunit:Interacts with HDAC1, HDAC2, HDAC3, HDAC4, HDAC5, NCOR1, NCOR2, SIN3A, SIN3B, RBBP4, RBBP7, MTA1L1, SAP30 and MBD3. Interacts with the 14-3-3 protein YWHAE, MEF2A, MEF2B and MEF2C (By similarity). Interacts with HTATIP and EDNRA. Interacts with KDM5B.,

Validation Data



Western Blot analysis of PC-3 cells using HDAC7 Polyclonal Antibody diluted at 1:1000



Western blot analysis of the lysates from HepG2 cells using HDAC7A antibody.

Contact information

Orders: order.cn@immunoway.com
 Support: support.cn@immunoway.com
 Telephone: 400-8787-807(China)
 Website: <http://www.immunoway.com.cn>
 Address: 2200 Ringwood Ave San Jose, CA 95131 USA



Please scan the QR code to access additional product information:
HDAC7 Rabbit pAb

For Research Use Only. Not for Use in Diagnostic Procedures.

[Antibody](#) | [ELISA Kits](#) | [Protein](#) | [Reagents](#)