

## hCAP-G2 Rabbit pAb

CatalogNo: YT2105

### Key Features

**Host Species**

- Rabbit

**Reactivity**

- Human, Mouse

**Applications**

- WB, IHC, IF, ELISA

**MW**

- 131kD (Calculated)

**Isotype**

- IgG

### Recommended Dilution Ratios

**WB 1:500-2000****IHC 1:100-1:300****ELISA 1:40000****IF 1:50-200**

### Storage

**Storage\***

-15°C to -25°C/1 year (Do not lower than -25°C)

**Formulation**

Liquid in PBS containing 50% glycerol, 0.5% BSA and 0.02% sodium azide.

### Basic Information

**Clonality**

Polyclonal

### Immunogen Information

**Immunogen**

The antiserum was produced against synthesized peptide derived from human NCAPG2. AA range: 561-610

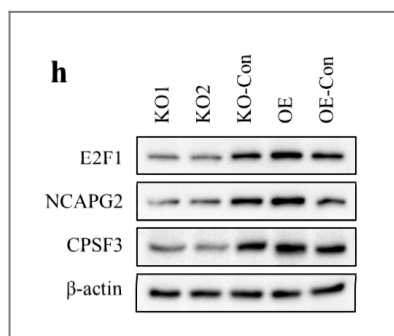
**Specificity**

hCAP-G2 Polyclonal Antibody detects endogenous levels of hCAP-G2 protein.

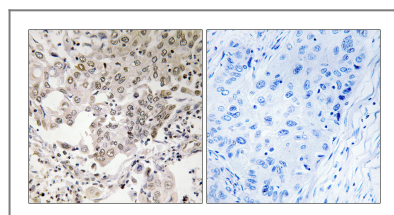
### Target Information

<b>Gene name</b>	NCAPG2		
<b>Protein Name</b>	Condensin-2 complex subunit G2		
	<b>Organism</b>	<b>Gene ID</b>	<b>UniProt ID</b>
	Human	<a href="#">54892;</a>	<a href="#">Q86XI2;</a>
	Mouse		<a href="#">Q6DFV1;</a>
<b>Cellular Localization</b>	Nucleus .		
<b>Tissue specificity</b>	Endometrium,Epithelium,Ovary,Testis,		
<b>Function</b>	Function:Regulatory subunit of the condensin-2 complex, a complex which establishes mitotic chromosome architecture and is involved in physical rigidity of the chromatid axis.,similarity:Contains 1 HEAT repeat.,subunit:Component of the condensin-2 complex, which contains the SMC2 and SMC4 heterodimer, and 3 non SMC subunits that probably regulate the complex: NCAPH2, NCAPD3 and NCAPG2.,		

## Validation Data



CPSF3 Promotes Pre-mRNA Splicing and Prevents CircRNA Cyclization in Hepatocellular Carcinoma. Cancers Qubo Zhu WB Human 1:1000 HepG2 cell,HuH7 cell



Immunohistochemistry analysis of paraffin-embedded human lung carcinoma, using NCAPG2 Antibody. The picture on the right is blocked with the synthesized peptide.

## Contact information

Orders: order.cn@immunoway.com  
 Support: support.cn@immunoway.com  
 Telephone: 400-8787-807(China)  
 Website: <http://www.immunoway.com.cn>  
 Address: 2200 Ringwood Ave San Jose, CA 95131 USA



Please scan the QR code to access additional product information:  
**hCAP-G2 Rabbit pAb**

