

## Gα olf Rabbit pAb

CatalogNo: YT2093

### | Key Features

#### Host Species

- Rabbit

#### Reactivity

- Human, Mouse, Rat

#### Applications

- WB, IHC, IF, ELISA

#### MW

- 40kD (Observed)

#### Isotype

- IgG

### | Recommended Dilution Ratios

**WB 1:500-1:2000**

**IHC 1:100-1:300**

**ELISA 1:20000**

**IF 1:50-200**

### | Storage

#### Storage\*

-15°C to -25°C/1 year (Do not lower than -25°C)

#### Formulation

Liquid in PBS containing 50% glycerol, 0.5% BSA and 0.02% sodium azide.

### | Basic Information

#### Clonality

Polyclonal

### | Immunogen Information

#### Immunogen

The antiserum was produced against synthesized peptide derived from human GNAL. AA range: 41-90

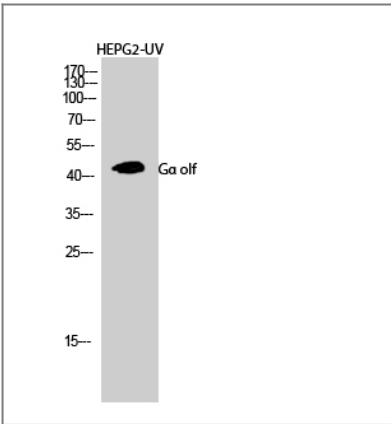
#### Specificity

Gα olf Polyclonal Antibody detects endogenous levels of Gα olf protein.

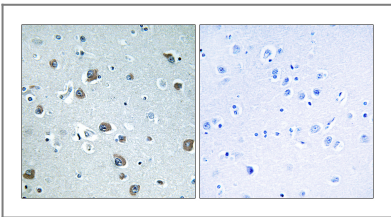
### | Target Information

Gene name	GNAL		
Protein Name	Guanine nucleotide-binding protein G(olf) subunit alpha		
	Organism	Gene ID	UniProt ID
	Human	<a href="#">2774;</a>	<a href="#">P38405;</a>
	Mouse	<a href="#">14680;</a>	<a href="#">Q8CGK7;</a>
	Rat		<a href="#">P38406;</a>
Cellular Localization	plasma membrane,extracellular exosome,		
Tissue specificity	Detected in olfactory neuroepithelium, brain, testis, and to a lower extent in retina, lung alveoli, spleen. Trace amounts where seen in kidney, adrenal gland and liver. Found to be expressed in all the insulinomas examined.		
Function	Function:Guanine nucleotide-binding proteins (G proteins) are involved as modulators or transducers in various transmembrane signaling systems. G(olf) alpha mediates signal transduction within the olfactory neuroepithelium and the basal ganglia. May be involved in some aspect of visual transduction, and in mediating the effect of one or more hormones/neurotransmitters.,similarity:Belongs to the G-alpha family. G(s) subfamily.,subunit:G proteins are composed of 3 units; alpha, beta and gamma. The alpha chain contains the guanine nucleotide binding site.,tissue specificity:Detected in olfactory neuroepithelium, brain, testis, and to a lower extent in retina, lung alveoli, spleen. Trace amounts where seen in kidney, adrenal gland and liver. Found to be expressed in all the insulinomas examined.,		

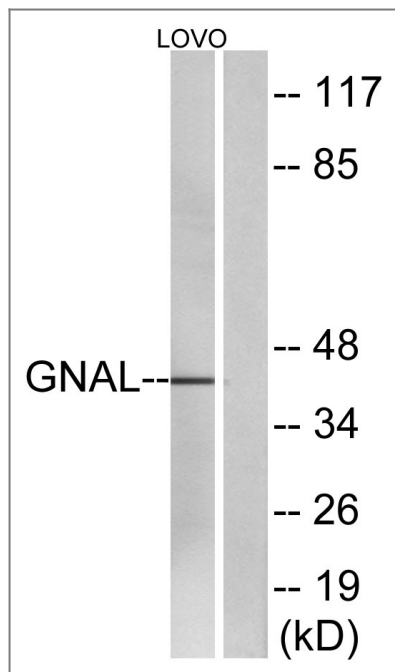
Validation Data



Western Blot analysis of HEPG2-UV cells using Gα olf Polyclonal Antibody diluted at 1:1000



Immunohistochemistry analysis of paraffin-embedded human brain tissue, using GNAL Antibody. The picture on the right is blocked with the synthesized peptide.



Western blot analysis of lysates from LOVO cells, using GNAL Antibody. The lane on the right is blocked with the synthesized peptide.

## Contact information

Orders: [order.cn@immunoway.com](mailto:order.cn@immunoway.com)  
 Support: [support.cn@immunoway.com](mailto:support.cn@immunoway.com)  
 Telephone: 400-8787-807(China)  
 Website: <http://www.immunoway.com.cn>  
 Address: 2200 Ringwood Ave San Jose, CA 95131 USA



Please scan the QR code to access additional product information:  
**Gα olf Rabbit pAb**

For Research Use Only. Not for Use in Diagnostic Procedures.

[Antibody](#) | [ELISA Kits](#) | [Protein](#) | [Reagents](#)