

Gz-α Rabbit pAb

CatalogNo: YT2090

Orthogonal Validated 

Key Features

Host Species

- Rabbit

Reactivity

- Human, Mouse, Rat, Monkey

Applications

- WB, IHC, IF, ELISA

MW

- 41kD (Observed)

Isotype

- IgG

Recommended Dilution Ratios

WB 1:500-1:2000

IHC 1:100-1:300

ELISA 1:40000

IF 1:50-200

Storage

Storage*

-15°C to -25°C/1 year (Do not lower than -25°C)

Formulation

Liquid in PBS containing 50% glycerol, 0.5% BSA and 0.02% sodium azide.

Basic Information

Clonality

Polyclonal

Immunogen Information

Immunogen

The antiserum was produced against synthesized peptide derived from human Gz-alpha. AA range:1-50

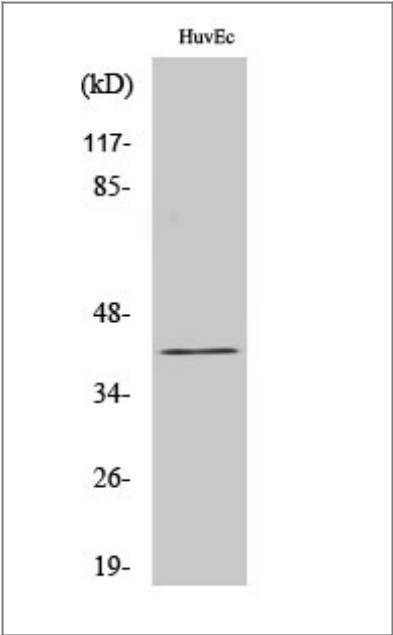
Specificity

Gz-α Polyclonal Antibody detects endogenous levels of Gz-α protein.

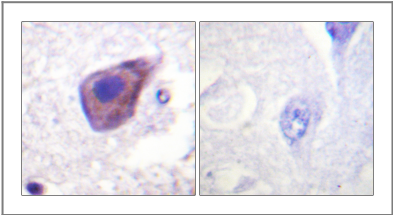
Target Information

Gene name	GNAZ		
Protein Name	Guanine nucleotide-binding protein G(z) subunit alpha		
	Organism	Gene ID	UniProt ID
	Human	2781 ;	P19086 ;
	Mouse	14687 ;	O70443 ;
	Rat	25740 ;	P19627 ;
Cellular Localization	Membrane; Lipid-anchor.		
Tissue specificity	Brain,PNS,		
Function	Function:Guanine nucleotide-binding proteins (G proteins) are involved as modulators or transducers in various transmembrane signaling systems.,similarity:Belongs to the G-alpha family. G(i/o/t/z) subfamily.,subunit:G proteins are composed of 3 units; alpha, beta and gamma. The alpha chain contains the guanine nucleotide binding site.,		

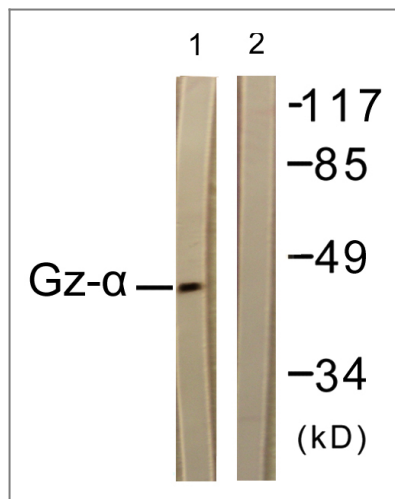
| Validation Data



Western Blot analysis of various cells using Gz-α Polyclonal Antibody



Immunohistochemistry analysis of paraffin-embedded human brain tissue, using Gz-alpha Antibody. The picture on the right is blocked with the synthesized peptide.



Western blot analysis of lysates from COS7 cells, treated with PMA 125ng/ml 30', using Gz-alpha Antibody. The lane on the right is blocked with the synthesized peptide.

Contact information

Orders: order.cn@immunoway.com
 Support: support.cn@immunoway.com
 Telephone: 400-8787-807(China)
 Website: <http://www.immunoway.com.cn>
 Address: 2200 Ringwood Ave San Jose, CA 95131 USA



Please scan the QR code to access additional product information:
Gz-α Rabbit pAb

For Research Use Only. Not for Use in Diagnostic Procedures.

[Antibody](#) | [ELISA Kits](#) | [Protein](#) | [Reagents](#)