

## GRO $\gamma$ Rabbit pAb

CatalogNo: YT2075

Orthogonal Validated 

### Key Features

#### Host Species

- Rabbit

#### Reactivity

- Human,Rat,Mouse,

#### Applications

- IHC,IF,ELISA

#### MW

- 11kD (Calculated)

#### Isotype

- IgG

### Recommended Dilution Ratios

IHC 1:100-1:300

ELISA 1:10000

IF 1:50-200

### Storage

**Storage\*** -15°C to -25°C/1 year(Do not lower than -25°C)**Formulation** Liquid in PBS containing 50% glycerol, 0.5% BSA and 0.02% sodium azide.

### Basic Information

**Clonality** Polyclonal

### Immunogen Information

**Immunogen** The antiserum was produced against synthesized peptide derived from human GROgamma. AA range:58-107**Specificity** GRO $\gamma$  Polyclonal Antibody detects endogenous levels of GRO $\gamma$  protein.

### Target Information

**Gene name** CXCL3

**Protein Name** C-X-C motif chemokine 3

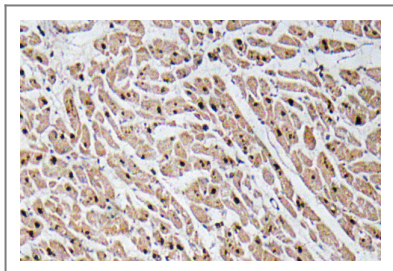
Organism	Gene ID	UniProt ID
Human	<a href="#">2921</a> ;	<a href="#">P19876</a> ;
Mouse		<a href="#">Q6W5C0</a> ;

**Cellular Localization** Secreted.

**Tissue specificity** Histiocytic lymphoma,Lung,Peripheral blood monocyte,Placenta,

**Function** Function:Ligand for CXCR2 (By similarity). Has chemotactic activity for neutrophils. May play a role in inflammation and exert its effects on endothelial cells in an autocrine fashion. In vitro, the processed form GRO-gamma(5-73) shows a fivefold higher chemotactic activity for neutrophilic granulocytes.,online information:CXCL3 entry,PTM:N-terminal processed form GRO-gamma(5-73) is produced by proteolytic cleavage after secretion from peripheral blood monocytes.,similarity:Belongs to the intercrine alpha (chemokine CxC) family.,

## Validation Data



Immunohistochemistry analysis of GROα antibody in paraffin-embedded human heart tissue.

## Contact information

Orders: [order.cn@immunoway.com](mailto:order.cn@immunoway.com)  
Support: [support.cn@immunoway.com](mailto:support.cn@immunoway.com)  
Telephone: 400-8787-807(China)  
Website: <http://www.immunoway.com.cn>  
Address: 2200 Ringwood Ave San Jose, CA 95131 USA



Please scan the QR code to access additional product information:  
**GROγ Rabbit pAb**