

GRO α Rabbit pAb

CatalogNo: YT2074

Orthogonal Validated 

Key Features

Host Species

- Rabbit

Reactivity

- Human, Mouse, Rat

Applications

- IHC, IF, ELISA

MW

- 11kD (Calculated)

Isotype

- IgG

Recommended Dilution Ratios

IHC 1:100-1:300

ELISA 1:10000

IF 1:50-200

Storage

Storage* -15°C to -25°C/1 year (Do not lower than -25°C)**Formulation** Liquid in PBS containing 50% glycerol, 0.5% BSA and 0.02% sodium azide.

Basic Information

Clonality Polyclonal

Immunogen Information

Immunogen The antiserum was produced against synthesized peptide derived from human GRO α . AA range: 39-88**Specificity** GRO α Polyclonal Antibody detects endogenous levels of GRO α protein.

Target Information

Gene name CXCL1

Protein Name Growth-regulated alpha protein

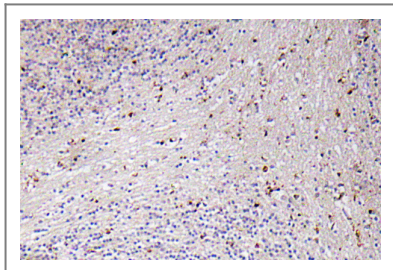
Organism	Gene ID	UniProt ID
Human	2919;	P09341;
Mouse	14825;	P12850;
Rat	81503;	P14095;

Cellular Localization Secreted.

Tissue specificity Blood,Ovary,Peripheral blood monocyte,Placenta,Skin,

Function Function:Has chemotactic activity for neutrophils. May play a role in inflammation and exerts its effects on endothelial cells in an autocrine fashion. In vitro, the processed forms GRO-alpha(4-73), GRO-alpha(5-73) and GRO-alpha(6-73) show a 30-fold higher chemotactic activity.,online information:CXCL1 entry,PTM:N-terminal processed forms GRO-alpha(4-73), GRO-alpha(5-73) and GRO-alpha(6-73) are produced by proteolytic cleavage after secretion from peripheral blood monocytes.,similarity:Belongs to the intercrine alpha (chemokine CxC) family.,

Validation Data



Immunohistochemistry analysis of GROα antibody in paraffin-embedded human brain tissue.

Contact information

Orders: order.cn@immunoway.com
Support: support.cn@immunoway.com
Telephone: 400-8787-807(China)
Website: <http://www.immunoway.com.cn>
Address: 2200 Ringwood Ave San Jose, CA 95131 USA



Please scan the QR code to access additional product information:
GROα Rabbit pAb