

## GPSN2 Rabbit pAb

CatalogNo: YT2042

### | Key Features

#### Host Species

- Rabbit

#### Reactivity

- Human, Mouse, Rat

#### Applications

- WB, IHC, IF, ELISA

#### MW

- 36kD (Calculated)

#### Isotype

- IgG

### | Recommended Dilution Ratios

**WB 1:500-2000**

**IHC 1:100-1:300**

**ELISA 1:40000**

**IF 1:50-200**

### | Storage

#### Storage\*

-15°C to -25°C/1 year (Do not lower than -25°C)

#### Formulation

Liquid in PBS containing 50% glycerol, 0.5% BSA and 0.02% sodium azide.

### | Basic Information

#### Clonality

Polyclonal

### | Immunogen Information

#### Immunogen

The antiserum was produced against synthesized peptide derived from human GPSN2. AA range: 259-308

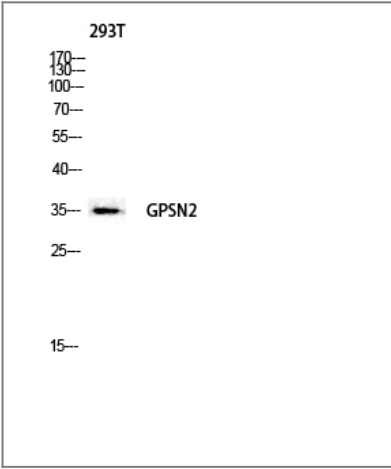
#### Specificity

GPSN2 Polyclonal Antibody detects endogenous levels of GPSN2 protein.

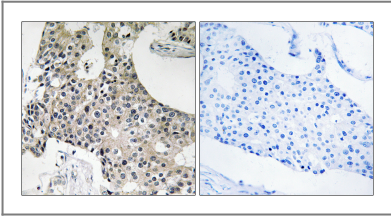
### | Target Information

Gene name	TECR		
Protein Name	Trans-2,3-enoyl-CoA reductase		
	Organism	Gene ID	UniProt ID
	Human	<a href="#">9524;</a>	<a href="#">Q9NZ01;</a>
	Mouse	<a href="#">106529;</a>	<a href="#">Q9CY27;</a>
	Rat	<a href="#">191576;</a>	<a href="#">Q64232;</a>
Cellular Localization	Endoplasmic reticulum membrane ; Multi-pass membrane protein .		
Tissue specificity	Expressed in most tissues tested. Highly expressed in skeletal muscle.		
Function	steroid biosynthetic process, steroid metabolic process, lipid biosynthetic process, oxidation reduction,		

| Validation Data



Western blot analysis of 293T lysis using GPSN2 antibody. Antibody was diluted at 1:2000



Immunohistochemistry analysis of paraffin-embedded human breast carcinoma tissue, using GPSN2 Antibody. The picture on the right is blocked with the synthesized peptide.

| Contact information

Orders: order.cn@immunoway.com  
Support: support.cn@immunoway.com  
Telephone: 400-8787-807(China)  
Website: <http://www.immunoway.com.cn>  
Address: 2200 Ringwood Ave San Jose, CA 95131 USA



Please scan the QR code  
to access additional  
product information:  
**GPSN2 Rabbit pAb**

---

For Research Use Only. Not for Use in Diagnostic Procedures.

[Antibody](#) | [ELISA Kits](#) | [Protein](#) | [Reagents](#)