

## GPS2 Rabbit pAb

CatalogNo: YT2041

### Key Features

**Host Species**

- Rabbit

**Reactivity**

- Human, Mouse, Rat

**Applications**

- WB, ELISA

**MW**

- 40kD (Observed)

**Isotype**

- IgG

### Recommended Dilution Ratios

**WB 1:500-1:2000****ELISA 1:40000****Not yet tested in other applications.**

### Storage

**Storage\***

-15°C to -25°C/1 year (Do not lower than -25°C)

**Formulation**

Liquid in PBS containing 50% glycerol, 0.5% BSA and 0.02% sodium azide.

### Basic Information

**Clonality**

Polyclonal

### Immunogen Information

**Immunogen**

The antiserum was produced against synthesized peptide derived from human GPS2. AA range: 11-60

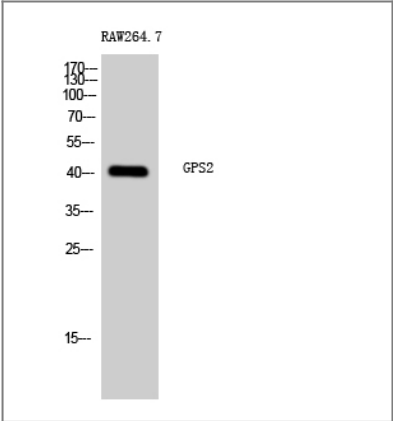
**Specificity**

GPS2 Polyclonal Antibody detects endogenous levels of GPS2 protein.

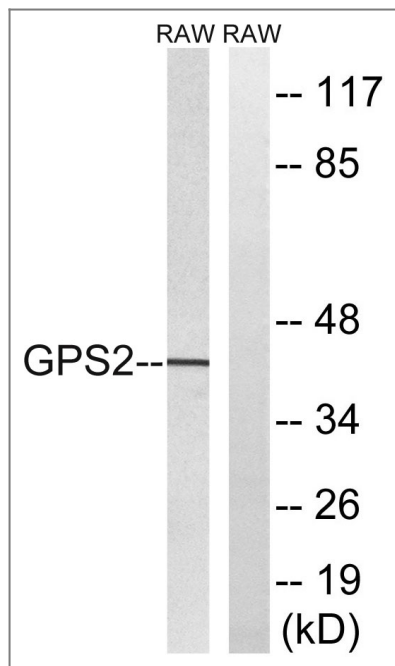
### Target Information

Gene name	GPS2		
Protein Name	G protein pathway suppressor 2		
	Organism	Gene ID	UniProt ID
	Human	<a href="#">2874</a> ;	<a href="#">Q13227</a> ;
Cellular Localization	Nucleus . Mitochondrion . Cytoplasm, cytosol . Sumoylation regulates the subcellular location (PubMed:24943844). Relocates from the mitochondria to the nucleus following desumoylation, leading to mediate mitochondrial stress response (By similarity). .		
Tissue specificity	Widely expressed.		
Function	Function:Suppresses G-protein- and mitogen-activated protein kinase-mediated signal transduction.,sequence Caution:Wrong choice of frame.,subunit:Component of the N-Cor repressor complex, at least composed of NCOR1, NCOR2, HDAC3, TBL1X, TBL1R, CORO2A and GPS2.,tissue specificity:Widely expressed.,		

Validation Data



Western Blot analysis of RAW264.7 cells using GPS2 Polyclonal Antibody cells nucleus extracted by Minute TM Cytoplasmic and Nuclear Fractionation kit (SC-003,Inventbiotech,MN,USA).



Western blot analysis of lysates from RAW264.7 cells, using GPS2 Antibody. The lane on the right is blocked with the synthesized peptide.

## Contact information

Orders: [order.cn@immunoway.com](mailto:order.cn@immunoway.com)  
 Support: [support.cn@immunoway.com](mailto:support.cn@immunoway.com)  
 Telephone: 400-8787-807(China)  
 Website: <http://www.immunoway.com.cn>  
 Address: 2200 Ringwood Ave San Jose, CA 95131 USA



Please scan the QR code to access additional product information:  
**GPS2 Rabbit pAb**

For Research Use Only. Not for Use in Diagnostic Procedures.

[Antibody](#) | [ELISA Kits](#) | [Protein](#) | [Reagents](#)