

## GPR68 Rabbit pAb

CatalogNo: YT2029

### Key Features

#### Host Species

- Rabbit

#### Reactivity

- Human, Mouse

#### Applications

- WB, IF, ELISA

#### MW

- 41kD (Observed)

#### Isotype

- IgG

### Recommended Dilution Ratios

**WB 1:500-1:2000**

**IF 1:200-1:1000**

**ELISA 1:5000**

**Not yet tested in other applications.**

### Storage

#### Storage\*

-15°C to -25°C/1 year (Do not lower than -25°C)

#### Formulation

Liquid in PBS containing 50% glycerol, 0.5% BSA and 0.02% sodium azide.

### Basic Information

#### Clonality

Polyclonal

### Immunogen Information

#### Immunogen

The antiserum was produced against a synthesized peptide derived from human GRP68. AA range: 281-330

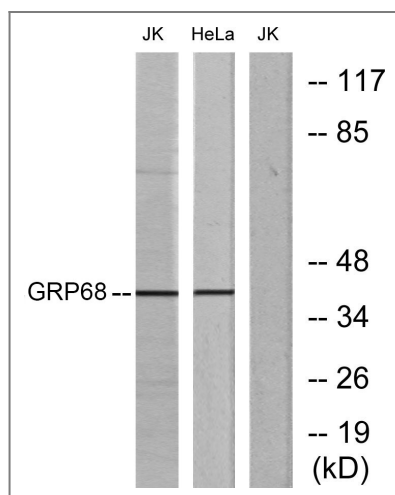
#### Specificity

GPR68 Polyclonal Antibody detects endogenous levels of GPR68 protein.

### Target Information

<b>Gene name</b>	GPR68		
<b>Protein Name</b>	Ovarian cancer G-protein coupled receptor 1		
	<b>Organism</b>	<b>Gene ID</b>	<b>UniProt ID</b>
	Human	<a href="#">8111</a> ;	<a href="#">Q15743</a> ;
	Mouse	<a href="#">238377</a> ;	<a href="#">Q8BFQ3</a> ;
<b>Cellular Localization</b>	Cell membrane; Multi-pass membrane protein.		
<b>Tissue specificity</b>	Found at low level in a wide range of tissues, but significantly expressed in lung, kidney, bone and nervous system.		
<b>Function</b>	similarity:Belongs to the G-protein coupled receptor 1 family.,		

## Validation Data



Western blot analysis of lysates from Jurkat and HeLa cells, using SPR1 Antibody. The lane on the right is blocked with the synthesized peptide.

## Contact information

Orders: [order.cn@immunoway.com](mailto:order.cn@immunoway.com)  
 Support: [support.cn@immunoway.com](mailto:support.cn@immunoway.com)  
 Telephone: 400-8787-807(China)  
 Website: <http://www.immunoway.com.cn>  
 Address: 2200 Ringwood Ave San Jose, CA 95131 USA



Please scan the QR code to access additional product information:  
**GPR68 Rabbit pAb**