

## GPR34 Rabbit pAb

CatalogNo: YT2014

### Key Features

#### Host Species

- Rabbit

#### Reactivity

- Human, Mouse, Rat, Monkey

#### Applications

- WB, IF, ELISA

#### MW

- 44kD (Observed)

#### Isotype

- IgG

### Storage

**Storage\*** -15°C to -25°C/1 year (Do not lower than -25°C)

**Formulation** Liquid in PBS containing 50% glycerol, 0.5% BSA and 0.02% sodium azide.

### Recommended Dilution Ratios

**WB 1:500-1:2000**

**IF 1:200-1:1000**

**ELISA 1:10000**

**Not yet tested in other applications.**

### Basic Information

**Clonality** Polyclonal

### Immunogen Information

**Immunogen** The antiserum was produced against synthesized peptide derived from human GPR34. AA range:181-230

**Specificity** GPR34 Polyclonal Antibody detects endogenous levels of GPR34 protein.

### Target Information

**Gene name** GPR34

**Protein Name** Probable G-protein coupled receptor 34

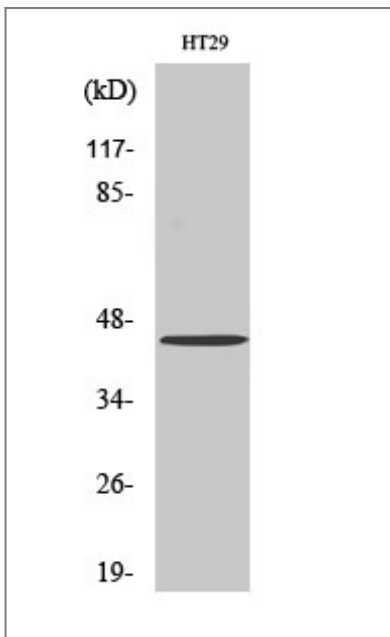
Organism	Gene ID	UniProt ID
Human	<a href="#">2857;</a>	<a href="#">Q9UPC5;</a>
Mouse	<a href="#">23890;</a>	<a href="#">Q9R1K6;</a>

**Cellular Localization** Cell membrane ; Multi-pass membrane protein .

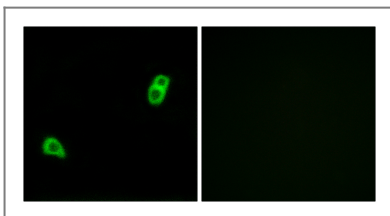
**Tissue specificity** Broadly expressed.

**Function** Function:Orphan receptor.,similarity:Belongs to the G-protein coupled receptor 1 family.,tissue specificity:Broadly expressed.,

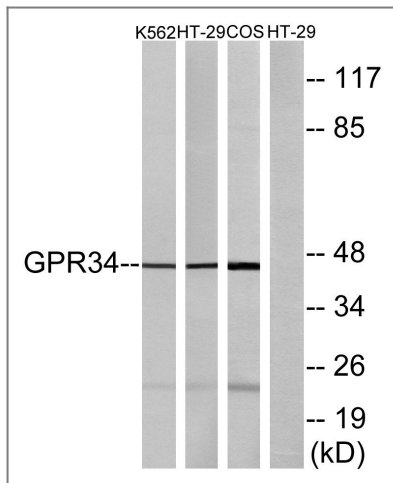
## Validation Data



Western Blot analysis of various cells using GPR34 Polyclonal Antibody



Immunofluorescence analysis of LOVO cells, using GPR34 Antibody. The picture on the right is blocked with the synthesized peptide.



Western blot analysis of lysates from HT-29, K562, and COS7 cells, using GPR34 Antibody. The lane on the right is blocked with the synthesized peptide.

## Contact information

Orders: [order.cn@immunoway.com](mailto:order.cn@immunoway.com)  
Support: [support.cn@immunoway.com](mailto:support.cn@immunoway.com)  
Telephone: 400-8787-807(China)  
Website: <http://www.immunoway.com.cn>  
Address: 2200 Ringwood Ave San Jose, CA 95131 USA



Please scan the QR code to access additional product information:  
**GPR34 Rabbit pAb**

For Research Use Only. Not for Use in Diagnostic Procedures.

[Antibody](#) | [ELISA Kits](#) | [Protein](#) | [Reagents](#)