

GPR171 Rabbit pAb

CatalogNo: YT1993

| Key Features

Host Species

- Rabbit

Reactivity

- Human,Rat,Mouse,

Applications

- WB,IF,ELISA

MW

- 36kD (Observed)

Isotype

- IgG

| Recommended Dilution Ratios

WB 1:500-1:2000

IF 1:200-1:1000

ELISA 1:10000

Not yet tested in other applications.

| Storage

Storage*

-15°C to -25°C/1 year(Do not lower than -25°C)

Formulation

Liquid in PBS containing 50% glycerol, 0.5% BSA and 0.02% sodium azide.

| Basic Information

Clonality

Polyclonal

| Immunogen Information

Immunogen

The antiserum was produced against synthesized peptide derived from human GPR171.
AA range:181-230

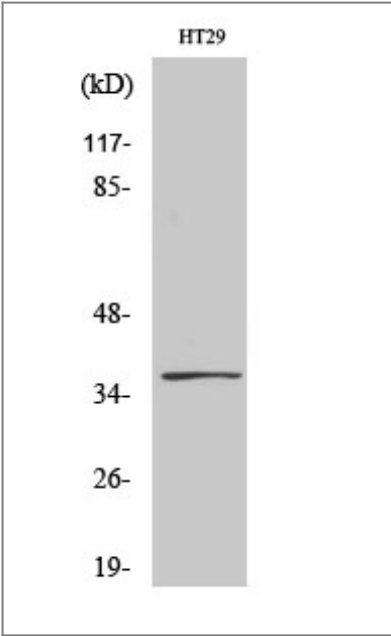
Specificity

GPR171 Polyclonal Antibody detects endogenous levels of GPR171 protein.

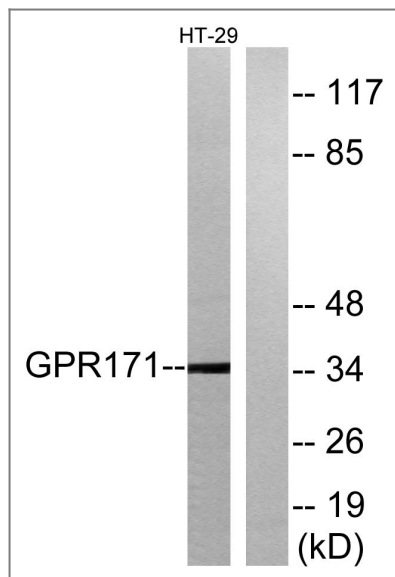
| Target Information

Gene name	GPR171		
Protein Name	Probable G-protein coupled receptor 171		
	Organism	Gene ID	UniProt ID
	Human	29909 ;	O14626 ;
	Mouse		Q8BG55 ;
Cellular Localization	Cell membrane ; Multi-pass membrane protein . Colocalized with GPR83 in the paraventricular nucleus. .		
Tissue specificity	Expressed in both T-cell subsets and natural killer cells, while it is undetectable in B cells or CD14(+) monocytes. Expressed in peripheral blood mononuclear cells (PBMC) and Jurkat cells (at protein level).		
Function	Function:Orphan receptor.,similarity:Belongs to the G-protein coupled receptor 1 family.,		

| Validation Data



Western Blot analysis of various cells using GPR171 Polyclonal Antibody



Western blot analysis of lysates from HT-29 cells, using GPR171 Antibody.
The lane on the right is blocked with the synthesized peptide.

Contact information

Orders: order.cn@immunoway.com
 Support: support.cn@immunoway.com
 Telephone: 400-8787-807(China)
 Website: <http://www.immunoway.com.cn>
 Address: 2200 Ringwood Ave San Jose, CA 95131 USA



Please scan the QR code
to access additional
product information:
GPR171 Rabbit pAb

For Research Use Only. Not for Use in Diagnostic Procedures.

[Antibody](#) | [ELISA Kits](#) | [Protein](#) | [Reagents](#)