

GPR10 Rabbit pAb

CatalogNo: YT1946

| Key Features

Host Species

- Rabbit

Reactivity

- Human, Mouse, Rat

Applications

- WB, IF, ELISA

MW

- 41kD (Observed)

Isotype

- IgG

| Recommended Dilution Ratios

WB 1:500-1:2000

IF 1:200-1:1000

ELISA 1:20000

Not yet tested in other applications.

| Storage

Storage*

-15°C to -25°C/1 year (Do not lower than -25°C)

Formulation

Liquid in PBS containing 50% glycerol, 0.5% BSA and 0.02% sodium azide.

| Basic Information

Clonality

Polyclonal

| Immunogen Information

Immunogen

The antiserum was produced against synthesized peptide derived from human PRLHR. AA range: 184-233

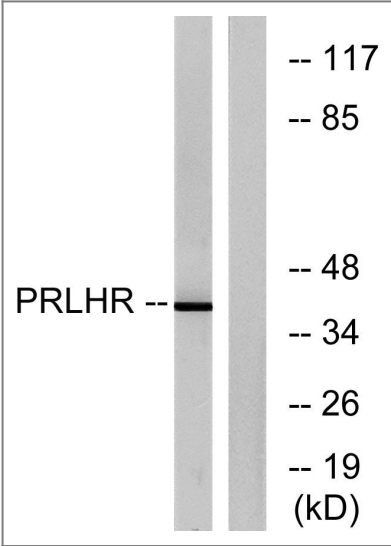
Specificity

GPR10 Polyclonal Antibody detects endogenous levels of GPR10 protein.

| Target Information

Gene name	PRLHR		
Protein Name	Prolactin-releasing peptide receptor		
	Organism	Gene ID	UniProt ID
	Human	2834;	P49683;
	Mouse	226278;	Q6VMN6;
	Rat	246075;	Q64121;
Cellular Localization	Cell membrane; Multi-pass membrane protein.		
Tissue specificity	Only detected in the pituitary gland and in all cell types of pituitary adenomas.		
Function	Function:Receptor for prolactin-releasing peptide (PrRP). Implicated in lactation, regulation of food intake and pain-signal processing.,induction:Repressed by bromocriptine, a dopamine agonist.,similarity:Belongs to the G-protein coupled receptor 1 family.,subunit:Interacts through its C-terminal region with the PDZ domain-containing proteins GRIP1, GRIP2 and PICK1. Interacts with PDZ domains 4 and 5 of GRIP1 and with the PDZ domain of PICK1.,tissue specificity:Only detected in the pituitary gland and in all cell types of pituitary adenomas.,		

| Validation Data



Western blot analysis of lysates from Jurkat cells, using PRLHR Antibody. The lane on the right is blocked with the synthesized peptide.

| Contact information

Orders: order.cn@immunoway.com
Support: support.cn@immunoway.com
Telephone: 400-8787-807(China)
Website: <http://www.immunoway.com.cn>
Address: 2200 Ringwood Ave San Jose, CA 95131 USA



Please scan the QR code
to access additional
product information:
GPR10 Rabbit pAb

For Research Use Only. Not for Use in Diagnostic Procedures.

[Antibody](#) | [ELISA Kits](#) | [Protein](#) | [Reagents](#)