

## Golgin 45 Rabbit pAb

CatalogNo: YT1942

### | Key Features

#### Host Species

- Rabbit

#### Reactivity

- Human, Mouse

#### Applications

- WB, IHC, IF, ELISA

#### MW

- 47kD (Observed)

#### Isotype

- IgG

### | Recommended Dilution Ratios

**WB 1:500-1:2000**

**IHC 1:100-1:300**

**IF 1:200-1:1000**

**ELISA 1:20000**

**Not yet tested in other applications.**

### | Storage

#### Storage\*

-15°C to -25°C/1 year (Do not lower than -25°C)

#### Formulation

Liquid in PBS containing 50% glycerol, 0.5% BSA and 0.02% sodium azide.

### | Basic Information

#### Clonality

Polyclonal

### | Immunogen Information

#### Immunogen

The antiserum was produced against synthesized peptide derived from human BLZF1. AA range: 10-59

#### Specificity

Golgin 45 Polyclonal Antibody detects endogenous levels of Golgin 45 protein.

## Target Information

Gene name BLZF1

Protein Name Golgin-45

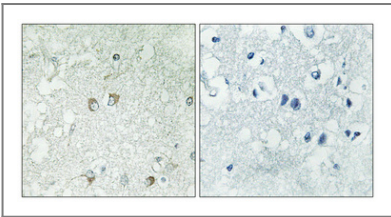
Organism	Gene ID	UniProt ID
Human	<a href="#">8548</a> ;	<a href="#">Q9H2G9</a> ;
Mouse	<a href="#">66352</a> ;	<a href="#">Q8R2X8</a> ;

**Cellular Localization** Golgi apparatus membrane .; [Isoform 1]: Nucleus . Detected in the nucleus upon heterologous expression. Not detected in the cytoplasm. .; [Isoform 2]: Cytoplasm . Not detected in the nucleus. .

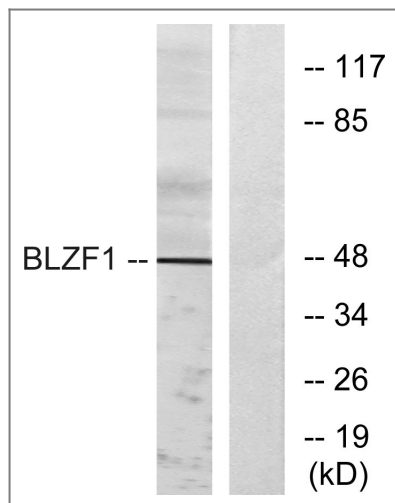
**Tissue specificity** Detected in adrenal gland (PubMed:9129147).

**Function** Caution:Because of the presence of a potential basic motif and leucine-zipper domain, PubMed:9129147 and PubMed:11056056 have thought that BLZF1 is a potential transcription factor. They found it localized in the nucleus, except isoform 2, which was cytoplasmic. However, homology at several typical position for basic or hydrophobic residues is missing.,Function:Required for normal Golgi structure and for protein transport from the endoplasmic reticulum (ER) through the Golgi apparatus to the cell surface.,induction:Up-regulated by retinoids.,subunit:Interacts with GORASP2 and with the GTP-bound form of RAB2, but not with other Golgi Rab proteins. GORASP2 and BLZF1 form a RAB2 effector complex on medial Golgi.,tissue specificity:Ubiquitous. Also found in cell lines derived from several hematopoietic pathologies, such as T-cell leukemia, pro-B, pre-B, myeloma, and plasmacytoma cell lines, but not in Burkitt lymphoma cells.,

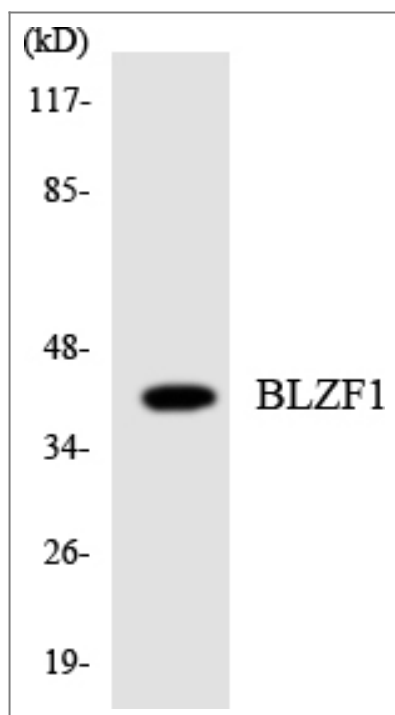
## Validation Data



Immunohistochemical analysis of paraffin-embedded Human brain. Antibody was diluted at 1:100(4° overnight). High-pressure and temperature Tris-EDTA,pH8.0 was used for antigen retrieval. Negative contrl (right) obtaned from antibody was pre-absorbed by immunogen peptide.



Western blot analysis of lysates from Jurkat cells, using BLZF1 Antibody. The lane on the right is blocked with the synthesized peptide.



Western blot analysis of the lysates from COLO205 cells using BLZF1 antibody.

## | Contact information

Orders: [order.cn@immunoway.com](mailto:order.cn@immunoway.com)  
Support: [support.cn@immunoway.com](mailto:support.cn@immunoway.com)  
Telephone: 400-8787-807(China)  
Website: <http://www.immunoway.com.cn>  
Address: 2200 Ringwood Ave San Jose, CA 95131 USA



Please scan the QR code  
to access additional  
product information:  
**Golgin 45 Rabbit  
pAb**