

## GIPR Rabbit pAb

CatalogNo: YT1906

### Key Features

#### Host Species

- Rabbit

#### Reactivity

- Human, Mouse, Rat

#### Applications

- WB, IHC, IF, ELISA

#### MW

- 53kD (Observed)

#### Isotype

- IgG

### Storage

**Storage\*** -15°C to -25°C/1 year (Do not lower than -25°C)

**Formulation** Liquid in PBS containing 50% glycerol, 0.5% BSA and 0.02% sodium azide.

### Recommended Dilution Ratios

**WB 1:500-1:2000**

**IHC 1:100-1:300**

**IF 1:200-1:1000**

**ELISA 1:20000**

**Not yet tested in other applications.**

### Basic Information

**Clonality** Polyclonal

### Immunogen Information

**Immunogen** The antiserum was produced against synthesized peptide derived from human GIPR. AA range:93-142

**Specificity** GIPR Polyclonal Antibody detects endogenous levels of GIPR protein.

## Target Information

**Gene name** GIPR  
**Protein Name** Gastric inhibitory polypeptide receptor

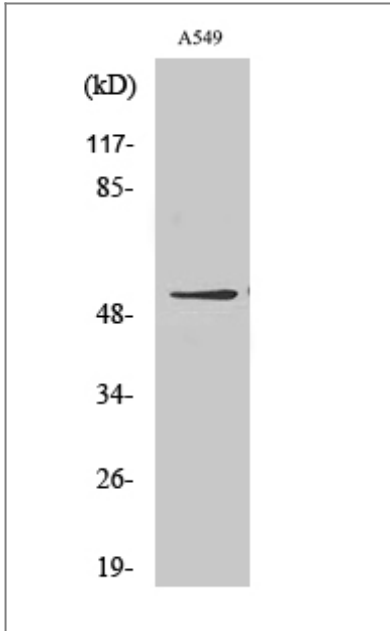
Organism	Gene ID	UniProt ID
Human	<a href="#">2696</a> ;	<a href="#">P48546</a> ;
Mouse		<a href="#">Q0P543</a> ;

**Cellular Localization** Cell membrane; Multi-pass membrane protein.

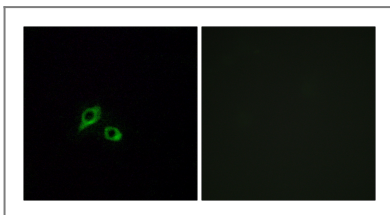
**Tissue specificity** Colon,G-protein coupled receptors,Pancreas,

**Function** Function:This is a receptor for GIP. The activity of this receptor is mediated by G proteins which activate adenylyl cyclase.,similarity:Belongs to the G-protein coupled receptor 2 family.,

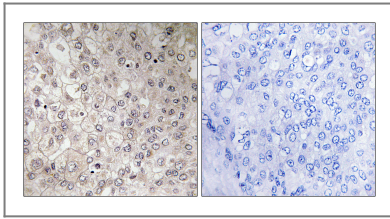
## Validation Data



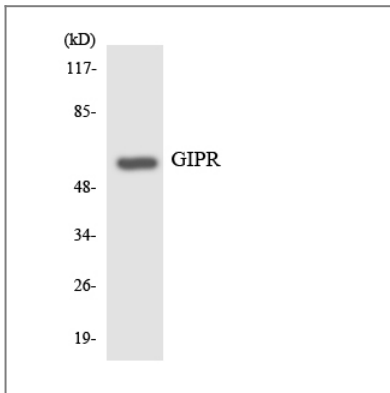
Western Blot analysis of various cells using GIPR Polyclonal Antibody



Immunofluorescence analysis of MCF7 cells, using GIPR Antibody. The picture on the right is blocked with the synthesized peptide.



Immunohistochemistry analysis of paraffin-embedded human liver carcinoma tissue, using GIPR Antibody. The picture on the right is blocked with the synthesized peptide.



Western blot analysis of the lysates from HT-29 cells using GIPR antibody.

## Contact information

Orders: [order.cn@immunoway.com](mailto:order.cn@immunoway.com)  
Support: [support.cn@immunoway.com](mailto:support.cn@immunoway.com)  
Telephone: 400-8787-807(China)  
Website: <http://www.immunoway.com.cn>  
Address: 2200 Ringwood Ave San Jose, CA 95131 USA



Please scan the QR code to access additional product information:  
**GIPR Rabbit pAb**

For Research Use Only. Not for Use in Diagnostic Procedures.

[Antibody](#) | [ELISA Kits](#) | [Protein](#) | [Reagents](#)