

Gemin3 Rabbit pAb

CatalogNo: YT1893

Key Features

Host Species

- Rabbit

Reactivity

- Human, Mouse

Applications

- WB, ELISA

MW

- 90kD (Observed)

Isotype

- IgG

Storage

Storage* -15°C to -25°C/1 year (Do not lower than -25°C)

Formulation Liquid in PBS containing 50% glycerol, 0.5% BSA and 0.02% sodium azide.

Recommended Dilution Ratios

WB 1:500-1:2000

ELISA 1:40000

Not yet tested in other applications.

Basic Information

Clonality Polyclonal

Immunogen Information

Immunogen The antiserum was produced against synthesized peptide derived from human DDX20. AA range: 273-322

Specificity Gemin3 Polyclonal Antibody detects endogenous levels of Gemin3 protein.

Target Information

Gene name DDX20

Protein Name Probable ATP-dependent RNA helicase DDX20

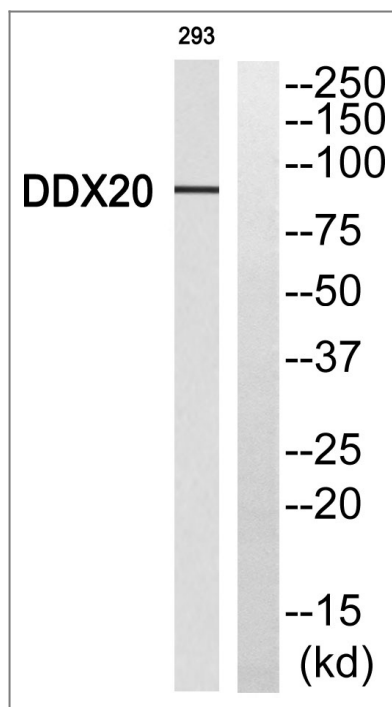
Organism	Gene ID	UniProt ID
Human	11218 ;	Q9UHI6 ;
Mouse	53975 ;	Q9JY4 ;

Cellular Localization Cytoplasm . Nucleus, gem . Localized in subnuclear structures next to coiled bodies, called Gemini of Cajal bodies (Gems). .

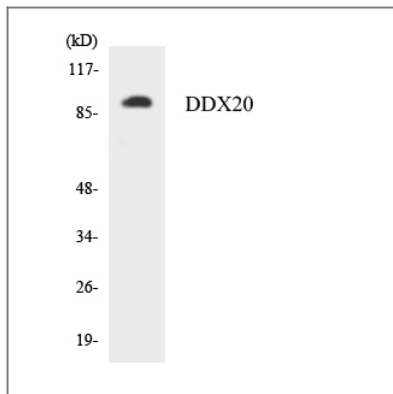
Tissue specificity Ubiquitous.

Function Function:The SMN complex plays an essential role in spliceosomal snRNP assembly in the cytoplasm and is required for pre-mRNA splicing in the nucleus. It may also play a role in the metabolism of snoRNPs.,similarity:Belongs to the DEAD box helicase family.,similarity:Belongs to the DEAD box helicase family. DDX20 subfamily.,similarity:Contains 1 helicase ATP-binding domain.,similarity:Contains 1 helicase C-terminal domain.,subcellular location:Localized in subnuclear structures next to coiled bodies, called Gemini of Cajal bodies (Gems).,subunit:Part of the core SMN complex that contains SMN1, SIP1/GEMIN2, DDX20/GEMIN3, GEMIN4, GEMIN5, GEMIN6, GEMIN7, GEMIN8 and STRAP/UNRIP. Interacts directly with SMN1 and with several spliceosomal snRNP core Sm proteins, including SNUPN, SNRPB, SNRPD2 and SNRPD3. Interacts with PPP4R2. Interacts with EBV EBNA2 and EBNA3C.,tissue specificity:Ubiquitous.,

Validation Data



Western blot analysis of DDX20 Antibody. The lane on the right is blocked with the DDX20 peptide.



Western blot analysis of the lysates from K562 cells using DDX20 antibody.

Contact information

Orders: order.cn@immunoway.com
Support: support.cn@immunoway.com
Telephone: 400-8787-807(China)
Website: <http://www.immunoway.com.cn>
Address: 2200 Ringwood Ave San Jose, CA 95131 USA



Please scan the QR code to access additional product information:

Gemin3 Rabbit pAb

For Research Use Only. Not for Use in Diagnostic Procedures.

[Antibody](#) | [ELISA Kits](#) | [Protein](#) | [Reagents](#)